

ad notam®

HIDDEN TECHNOLOGY - TECHNOLOGY BECOMES INVISIBLE.

DFU-0260-071

ACCESSORIES

MONITOR

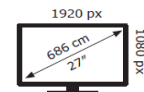


ad notam

DFU-0260-071



22 kWh/1000h



02/02/2024

PACKAGE INCLUDES

- 1x DFU Monitor System
- 1x External Power Adaptor
- 1x AC Power Cord
- 1x IR Remote Control Waterproof incl. Batteries
- 1x User Manual



Proprietary and Confidential The information contained in this document is the sole property of ad notam.

Any reproduction in part or in whole without written permission from ad notam is prohibited.

This product, parts, components or the assembly might be part of or protected by one of the following intellectual property rights:

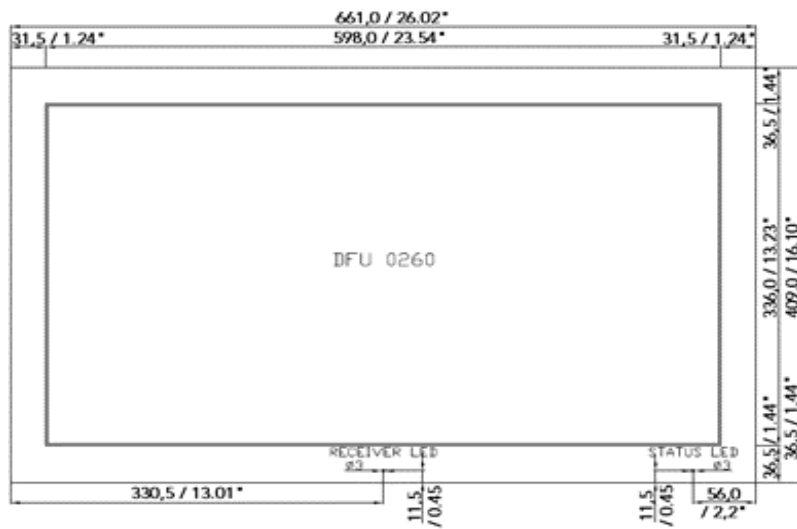
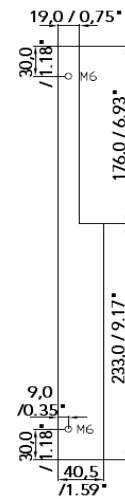
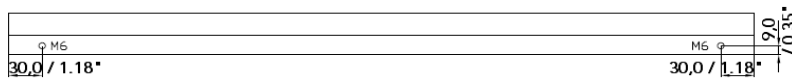
EP 1168285 / US 7,455,412 / EP 1429308 / EP 1809828 / US 7,589,893 / DE 10139890

ad notam[®]

HIDDEN TECHNOLOGY - TECHNOLOGY BECOMES INVISIBLE.

DFU-0260-071**GENERAL INFORMATION**

Article number	DFU-0260-071
Product dimensions *	661 x 409 x 40.5 mm (26.02" x 16.10" x 1.59")
Product weight	7,0 kg (15.4 lbs)
Permitted product usage	For In-Door-Use only
Operating temperature	0 to 50 Celcius (32 to 122 Fahrenheit)
Humidity	20% - 80%
HS Code	85 28 52 91

DRAWINGS**Frontview****Sideview****Topview**

Drawing measure

mm

inches

ad notam[®]

HIDDEN TECHNOLOGY - TECHNOLOGY BECOMES INVISIBLE.

DFU-0260-071**SPECIFICATION**

Display type (Backlight type)	TFT Thin Film Transistor (LED)
Screen diagonale	27" (685,8 mm)
Screen active area (WxH) **	598 x 336 mm (23.54" x 13.23")
Picture format	16:9
Physical resolution	1920 x 1080
Viewing angle	Horizontal (Total / Left / Right): 178 / 89 / 89 Vertical (Total / Up / Down): 178 / 89 / 89
Brightness ***	max. 800 cd/m ²
Contrast	Typical: 1000:1
Response time	14 ms
Refresh rate	60 Hz
Power consumption	DC 12V / Standby: 0,3W / 25mA / Maximum: 53,3W / 4,44A
OSD language	Deutsch, English, Espanol, Francais, Italiano, Portugues, Chinese
Certification	EN 62368-1, EN 55032, EN 55024, EN 55013, EN 55020, EN 61000, EN 50581, EN 14372, IEC62321
Lifetime (backlight)	~ 15.000 operating hours

INPUTS & OUTPUTS

Input	Output		
X		HDMI 2.0	3x HDMI terminal 480i, 480p, 576i, 576p, 720i, 720p, 1080i, 1080p
X		Component (YPbPr / YCbCr)	3x RCA terminal green (Y), blue (Pb), red (Pr) 720p, 1080i, 1080p
X		USB	1x USB terminal Media Player & Software Update
X		RS232	1x D-Sub 9pin male
X		Line Audio Input	2x RCA terminal white (L), red (R)
X		IR Input (Infrared)	1x Mini Jack 3.5 mm
		VGA	1x D-Sub 15pin female VGA, SVGA, XVGA, SXVGA, UXGA
X		DC Input	1x DC XLR 4pin male 24V
	X	Speaker Output	1x Phoenix Clip 4pin 2x 8W RMS @ 8 Ohms per channel
	X	IR Output (Cable)	1x Mini Jack 3.5 mm
	X	IR Output (LED)	1x Mini Jack 2.5 mm
	X	Line Audio Output	1x Mini Jack 3.5 mm
	X	DC Output 5V/12V	1x Molex Mini-Fit Jr. Header, Dual Row,4 Circuit max. 2.0A / only one active voltage

* Tolerances of +/- 1 mm apply.

** The glass active area is always a little smaller than the specified screen active area.

*** Brightness varies at factory calibrated settings.