

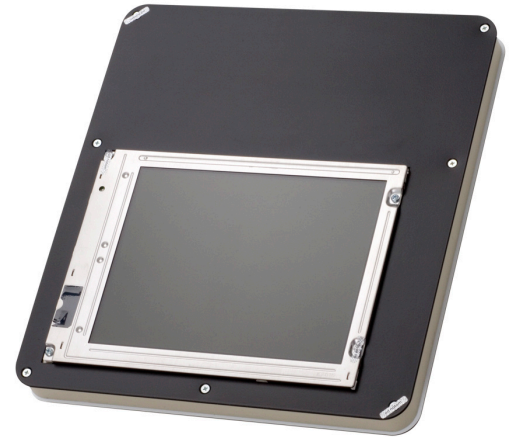
ad notam LCD FP-SERIES

FP 10.4"

MIRROR IMAGE® is the engine that drives images through glass and mirror to deliver superb picture quality. All products are German made, custom-engineered, LCD technology. They are exclusively designed to overcome the unique challenges of operating in ventilation deprived environments and to allow easy and adjustable mounting. The unique magnet mounting system accompanying all products is distinctively designed to suit all particularized placements behind any glass surfaces.

When combined with MAGIC MIRROR®, MIRROR IMAGE® turns completely invisible when turned off. MIRROR IMAGE® technology is patent protected.

The FP LINE is a high-quality multifunction flush fitted monitor. The different models are equipped with FBAS, RGB and DVI signal inputs. In addition to excellent picture quality, the FP LINE monitors offer automatic signal recognition, very long lifetime, wide viewing angle, and automatic color and brightness adjustment.



PRODUCT HIGHLIGHTS

- Flush fitted monitor
- Enhanced picture quality
- Low Voltage
- Doesn't require ventilation
- Sealed casing
- Ultra slim profile
- Magnetic mounting system allows for easy installation and removal
- LCD Technology
- Auto signal detection logic
- Optional RF remote control (no IR eye needed)
- DOG system architecture
- Adjustable mounting system for particularized placement

Article No.:

Screensize	Art.No.
10.4"	FP 104-5

ad notam LCD FP-SERIES

FP 10.4"

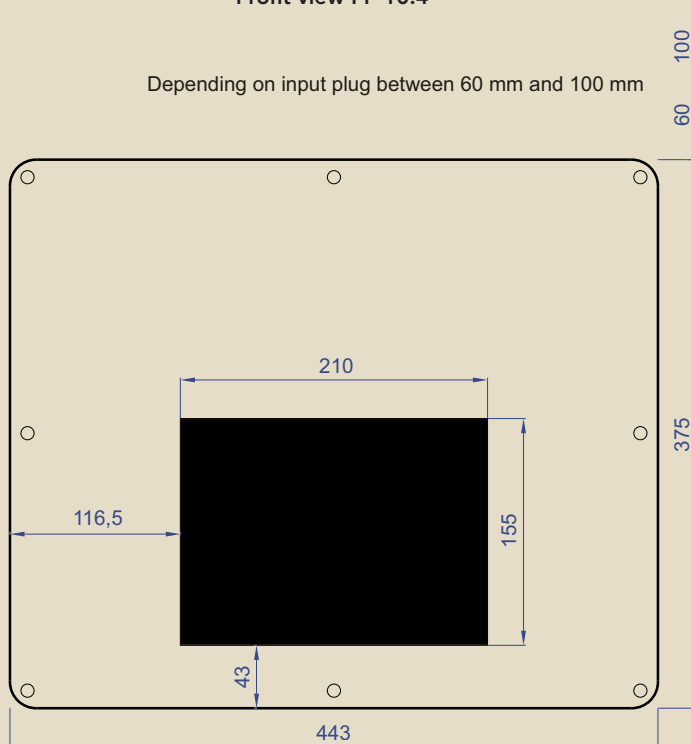
Technical Datasheet:

Top view
FP 10.4" PAL + NTSC

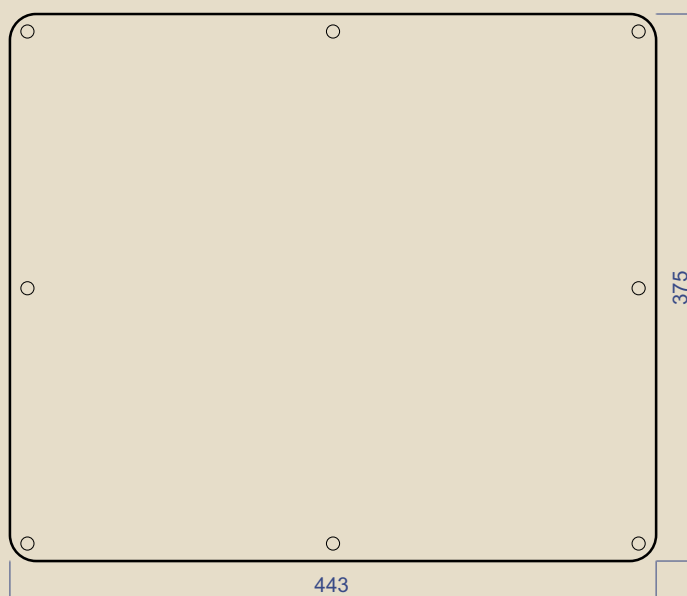


Front view FP 10.4"

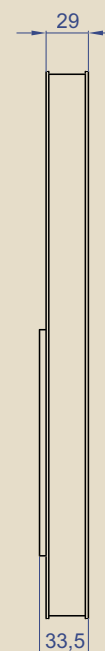
Depending on input plug between 60 mm and 100 mm



Back view FP 10.4"



Side view
FP 10.4"



ad notam LCD FP-SERIES

FP 10.4"

Screen technology:

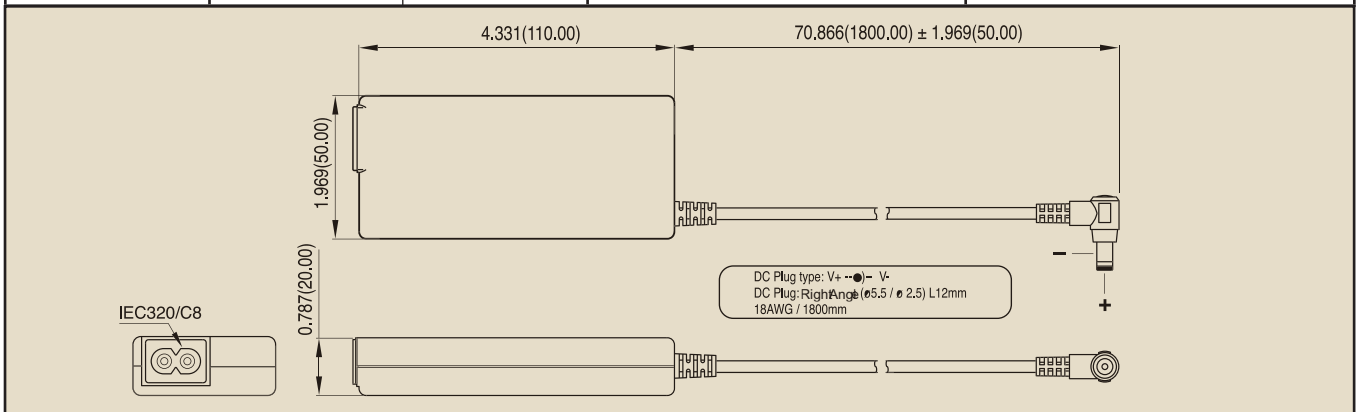
Art.No. / Features	FP 104-5
Display Type	TFT Thin Film Transistor
Active Screen Area	W x H 210 x 155 mm / 8.3" x 6.1" Diagonal 260 mm / 10.4"
Picture Format	4:3
Physical Resolution	640 x 480
Viewing Angle	Horizontal 140 Vertical 110
Brightness	350 cd/m ²
Contrast	300 : 1
Response Time	14 ms
Inputs	Y/C, FBAS, VGA, DVI, VGA-YUV, VGA-RGB-S
Video Signal Inputs	PAL/SECAM, NTSC, HDTV, YUV, RGB-S, RGB (VGA, SVGA, XGA, SXGA, UXGA)
Operating Temperature	5 to 50 Celsius / 41 to 122 Fahrenheit
Power	DC 12V 20 W / 1700 mA
Weight	3,1 kg
Amplifier Output	-
Equalizer	-
Tuner Receiver	-
Tuner Channels	-
Receivable Tuner Channels	-
FM Radio	-
Image flip	-
Interactive Port RJ45	IR/RF Input (optional) RS 232 (optional) LED control (optional) Power control (optional)
Remote Control Code	-

ad notam LCD FP-SERIES

FP 10.4"

Power supply:

Power	Voltage		Type	Operating Temperature
	IN	OUT		
90 – 264 Vac	30 W / 2,5 A	12 V DC	NE-T 36	0 - 40 °C



Optional Remote Control Aqua IR:

Type	Feature	Dimensions B x H x D
IR Infrared	Water resistant	110 x 58 x 38 mm 4.33" x 2.28" x 1.44"



Optional Remote Control Slimline:

Type	Color	Dimensions B x H x D
RF xxx	Black	225 x 45 x 16 mm 8.9" x 1.8" x 0.6"

