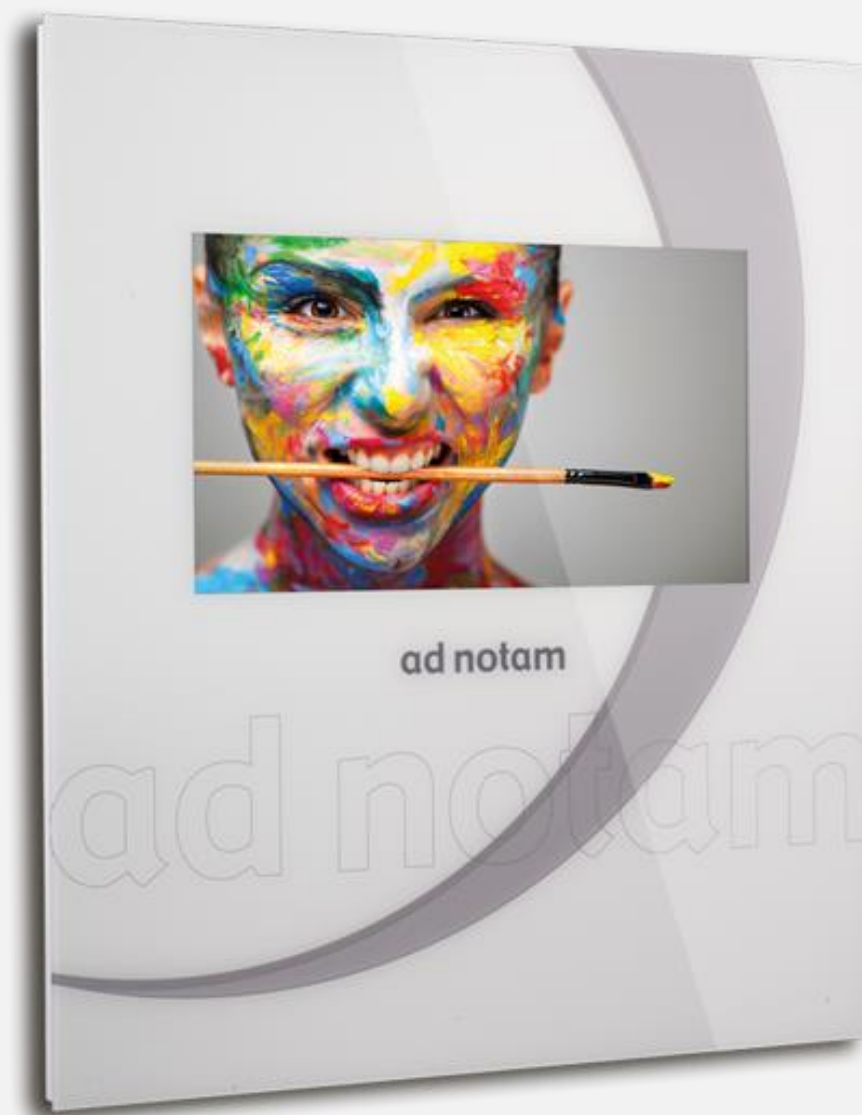


ad notam[®]

HIDDEN TECHNOLOGY – TECHNOLOGY BECOMES INVISIBLE.

GLASS TV



OWNER'S MANUAL

CONSTELLATION – SIGNATURE

For On Wall Installation

Register your product and get support at: www.ad-notam.com

INTRODUCTION

Thank you for choosing ad notam.
You acquired a high-quality product; ad notam means supreme technology and design.

CONTENT

• SAFETY	3
• WARNINGS	4
• CLEANING AND PRODUCT CARE	5
• ENVIRONMENTAL	5
• AD NOTAM CONFIGURATOR	6
• PRODUCT DELIVERY	7
• MOUNTING YOUR AD NOTAM	8
- ON WALL MOUNTING - WALL PREPARATION	9
- ON WALL MOUNTING - MONITOR	14
- ON WALL MOUNTING - FINAL ASSEMBLY	17
• HIGHLIGHTS SUGGESTED SETTINGS	20
• CONNECT YOUR PRODUCT	21
- POWER	21
- AUDIO-VIDEO	22
- EXTERNAL CONTROL	23
• USE YOUR SCREEN	24
• ON SCREEN DISPLAY (OSD MENU)	25
• SERVICE SETTINGS	27
• USING YOUR WATERPROOF REMOTE CONTROL	29
- HOW TO PROGRAM	30
• USING YOUR SLIMLINE REMOTE CONTROL	31
• USING YOUR TOUCHPAD	32
• ADJUSTING YOUR DIGITAL CLOCK	33
• SOFTWARE	34
• COPYRIGHTS, LICENCES & CERTIFICATES	35
• TROUBLESHOOTING	35
• SERVICE & SUPPORT	35

SAFETY

To prevent damage to your ad notam product or injury to yourself or to others, read the safety instruction in their entirety before installing and operating the product. Keep these safety instructions where all those who use the product will read them. Warranty will be null and void for any damage resulting from installation and operation not respecting these instructions.

CAUTION
RISK OF ELECTRIC SHOCK DO NOT OPEN
CAUTION: To reduce the risk of electric shock, do not remove cover (or back). There are no user serviceable parts inside. Refer all servicing to qualified personnel.



THIS ICON MARKS WARNING. Indicates that high voltage is present inside. It is dangerous to make any kind of contact with any internal part of this product.



THIS ICON MARKS WARNING. Indicates important literature concerning operation and maintenance. To prevent possible injury, read all warning before using this product.



THIS ICON MARKS CAUTION. To prevent the spread of fire, keep candles or other open flames away from this product at all times.

WARNINGS

- ⚠ LIQUIDS. Never expose the product to rain or water. Never place liquid containers, such as vases, near the product. If liquids are spilt on or into the product, disconnect it from the power outlet immediately. Contact your authorized dealer immediately to have the product checked before use.
- ⚠ GLASS. Parts of this product are made out of glass. Handle with care to avoid injury or damage.
- ⚠ HANDLING. Parts of this product are made out of glass and sharp material. Always wear safety shoes and gloves when handling the products or its packaging.
- ⚠ HANDLING. ad notam products are made of heavy components. Two or more people may be needed to transport large goods. When handling the goods make sure to separate and disconnects all parts before any movement. Do not put stress on the LCD nor glass/mirror. Prepare the environment properly to gently accommodate any item on a adequately soft and cushioned surface.
- ⚠ GLASS. The corners and edges of the glass are very delicate. Take care that they do not hit the wall, ceiling or floor in any way to avoid damages and split-offs.
- ⚠ ELECTRICITY. To avoid electric shock, never touch the inside of this product. Refer to a qualified technician.
- ⚠ ELECTRICITY. Do not overload wall outlets, extension cords or adaptors above their capacity, since this can result in fire or electric shock.
- ⚠ ELECTRICITY. Before you connect the product to the power outlet ensure that the power voltage matches the value printed on the back of the product. Never connect the product to the power outlet if the voltage is different.
- ⚠ ELECTRICITY. To disconnect the product from the mains power, the power plug of the product must be disconnected. When disconnecting the power, always pull the power plug, never the cord. Ensure that you have full access to the power plug, power cord and outlet socket at all times.
- ⚠ IRREGULAR OPERATION. If this product does not operate normally, in particular, if there are any unusual sounds or smells coming out of it, unplug it immediately and contact an authorized dealer or service center.
- ⚠ WET ENVIRONEMT. For installations in wet-rooms specific installation guidelines apply, which are to be seen in the context of placing a power adaptor outside of certain protection zones. These regulations differ by region. Please contact a specialist for this. In Germany electrical installations are to be performed by a skilled technician, while observing the regulations of the standard DIN VDE 0100 T.701.
- ⚠ INDOOR USE. The product is specifically designed for indoor use. There is danger of fire and of electric shocks and damage to the device if it is operated outdoors.
- ⚠ VENTILATION. Never insert objects into nor cover the ventilation slots or other openings on the product.
- ⚠ HEAT SOURCES. Do not place this product near or over heat sources or where it is exposed to direct sunlight. Never expose your product, remote control or batteries to excessive heat.
- ⚠ FLAMABLE GAS. Do not use in the presence of flammable gas, as this could result in explosion or fire.
- ⚠ CHILDREN. Keep out of reach of children. Failure to observe this precaution could result in injury.

CLEANING AND PRODUCT CARE

CLEANING. Use a soft damp cloth (cotton, flannel, etc.) and gently wipe the surface of the product. Wiping with a hard cloth or using strong force may scratch the surface of the product. Never touch, push, rub or strike the screen with any object.

CLEANING. Avoid using benzene, thinner and other solvents as they may deform the product and may cause the paint to peel off. Using a chemical cloth (wet/dry sheet type cloth, etc.) may cause damages and corrode the product. To avoid deformation and color fading, wipe off water drops as soon as possible.

OPERATION. Avoid static images on screen as much as possible. Static images are images that remain onscreen for extended periods of time. Static images include onscreen

menus, black bars, time displays, etc. If you must use static images, reduce screen's contrast and brightness to avoid screen damage.

ENVIRONMENT. On rare occasions, depending on temperature and humidity, minor condensation can occur on the inside of the glass front. To prevent this, do not expose the product to direct sunlight, heat or extreme humidity. If condensation occurs, it will disappear spontaneously after the product has played for a few hours.

ENVIRONMENT. The product must be stored in a dry and well ventilated room, without extreme temperature fluctuations. Heat sources and aggressive active substances may not be stored in the proximity of this product.

ENVIRONMENTAL

ad notam aims to design, produce, deliver and dispose eco-friendly products. Our environmental policy applies to the entire product lifecycle and business activities.



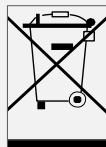
LOW STANDBY POWER

Our highly advanced power circuitry brings down power consumption to an extremely low level while in standby mode



EUROPEAN ENERGY LABEL

The European Energy Label informs you on the energy efficiency class of this product. The greener the energy efficiency class of this product is, the lower the energy it consumes. On the label, you can find the energy efficiency class, the average power consumption of this product in use and the average energy consumption for 1 year based on 4 hours' operations per day.



END OF USE

When this crossed-out wheeled bin symbol is attached to a product the product is covered by the European Directive 2002/96/EC. Inform yourself about the local separate collection system for electrical and electronic products. Act according to your local rules and do not dispose your old products with your normal household waste. Correct disposal of the product helps to prevent potential negative consequences for the environment and human health.

PRODUCT DELIVERY

WOODEN CRATE AND GIFTBOX INSPECTION

You purchased a high-end device. Verify wooden crate and gift box integrity before unloading the product. If damage is noticed write all the information on the bill of lading and hand it to the driver of the forwarder. Pictures will be required for the claim process. You can consult your ad notam reseller for additional information.



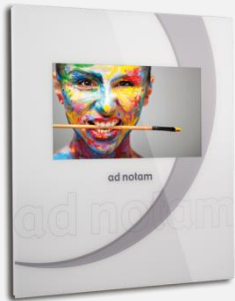
GIFTBOX

WOODEN CRATE



WHAT IS IN THE BOX

Please check the following contents for completeness before using the product.



GLASS TV



OWNER'S MANUAL



DFU xxxx
DISPLAY



WATERPROOF
IR REMOTE (Optional)



SLIMLINE
IR REMOTE (Optional)



DIGITAL CLOCK
IR REMOTE (Optional)



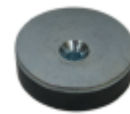
WALL MOUNTING
PLATE (Optional)



WALL LOCKING
PLATE (Optional)



HOLDING ANGLE
(Optional)



FIXATION MAGNET
(Optional)



DISTANCE RING
(Optional)



MIRROR POWER
Power Supply 200/600



CEILING SPEAKERS
(Optional)



IR RECEIVER
(Optional)



IR LOOP THROUGH
(Optional)



IR EMITTER
(Optional)



VDC EXTENSION
Extension Cable 12/24 V (Optional)



HDMI CABLE



USB CABLE



POWER CORD

MOUNTING YOUR AD NOTAM

BEFORE YOU START

Safety, environment, expert tips!

SAFETY

WARNINGS

- ⚠ SAFETY. To prevent damage to your ad notam product or injury to yourself or to others, read the safety instruction in their entirety before installing and operating the product. Keep these safety instructions where all those who use the product will read them. Warranty will be null and void for any damage resulting from installation and operation not respecting these instructions.
- ⚠ ORIGINAL MATERIAL. Always use ad notam supplied wall brackets and original spare parts to perform installation.
- ⚠ WOODEN CRATE. The wooden crate is securing glass and mirror. Incline the wooden crate adding a thick spacer (eg. 10 cm wooden bar) underneath the front foot to avoid all glass and mirror to fall off the crate while removing the front panel. Open carefully making sure a second person is on site.
- ⚠ WALL FIXINGS. ad notam doesn't provide screws and dowels with this product. Consider the construction environment, wall type, product weight and positioning when selecting raw bolts or resin anchors.
- ⚠ QUALIFIED PERSONNEL. Mounting this product requires structural measures and special skills. Refer exclusively to qualified personnel.
- ⚠ QUALIFIED PERSONNEL. Electrical connections must be performed by qualified professionals respecting national regulations and standards.

ENVIRONMENT

ad notam products include heavy, bulky and delicate items. To prevent damages to your ad notam product or injury to yourself or to others, prepare the installation environment properly.

CAUTIONS

- ✓ ENVIRONMENT. Clean the handling and installation environments properly before installation.
- ✓ HANDLING. Handling ease requires proper planning. Verify size, turning angles, bumps and potential hurdles before handling.
- ✓ ENVIRONMENT. ad notam mounting systems are engineered for vertical use only. Verify walls' verticality and items vertical and horizontal alignment to prevent serious injuries and product damage.
- ✓ HANDLING. Cushions the floor properly using soft anti slip mats near the handling areas. Lay the items gently on these cushioned anti slip surfaces when needed.
- ✓ HANDLING. Tilt the mirror and DFU top to the wall with an adequate angle of incidence when resting.

EXPERT TIPS

- ✓ SCREEN PLACEMENT The ideal distance to watch your display is 3 times its screen size diagonal with the eyes leveled at the screen center. Don't place the product under direct shining light.
- ✓ EXTERNAL POWER ADAPTER External power adapters require a minimum air volume to avoid overheating and proper long-lasting operations. Allow at least 10cm all around a 12V DC model or 20cm all around a 24V DC model.
- ✓ EXTERNAL POWER ADAPTER Install the external power adapter in accessible service friendly location, if you require extension cables refer to your ad notam specialist. Install the external power adapter on a steady flat surface, do not hang nor cover.
- ✓ TOOLS ad notam products installation requires specific professional tools. Verify the following page for a comprehensive list.

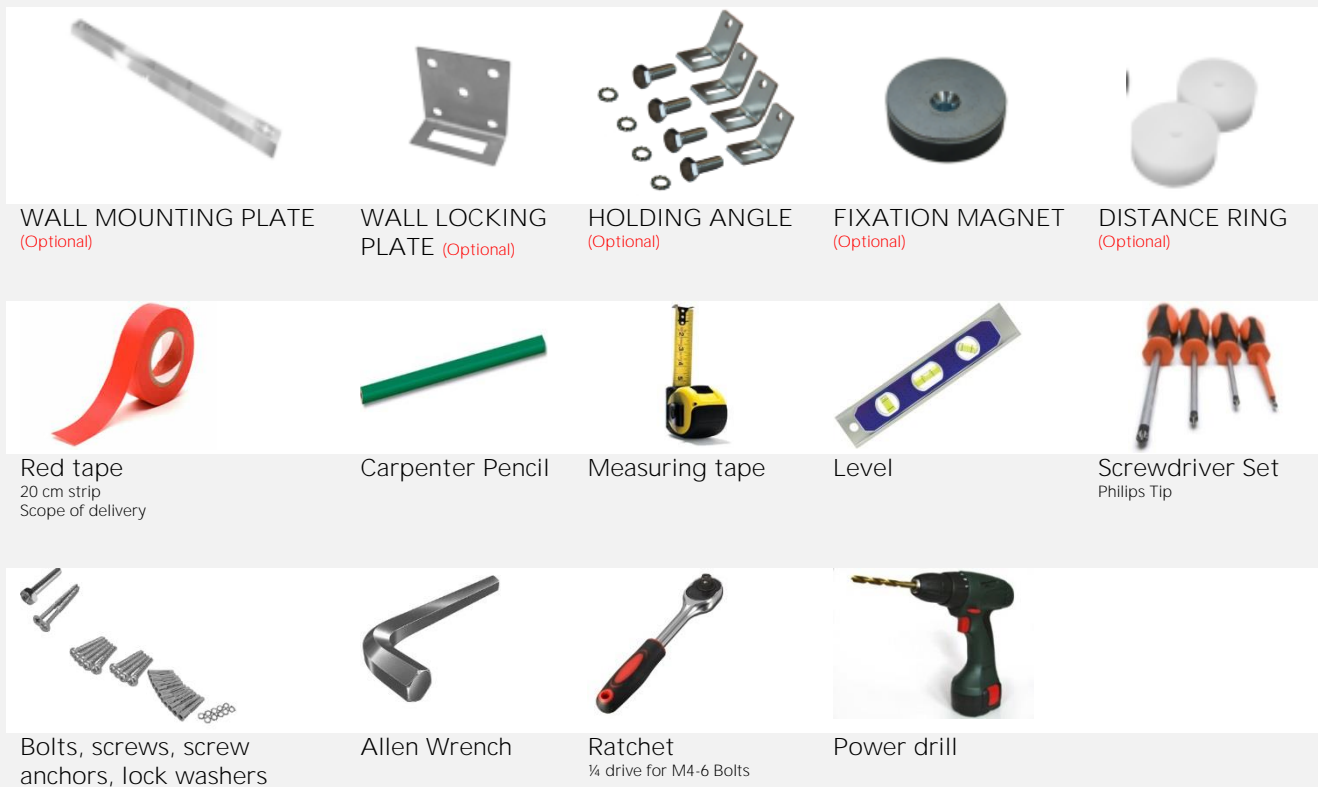

MOUNTING YOUR AD NOTAM

ON WALL MOUNTING - WALL PREPARATION


Your own ad notam has been pre-assembled according to your configuration instruction. The product back view including pre-assembled items is visible on your *shop drawing Page 3 (Back View)* you can find additional information on the visible items on *page 4 (Legend - Back View)*.

To determine the proper position of your ad notam on the wall the ad notam configuration provides an ideal Wall View preparation. The Wall View (including necessary items) is visible on *shop drawing page 5 (Wall View)*. Consult your *shop drawing page 6 (Legend - Wall View)* for additional information concerning spare parts necessary for installation. Refer to these pages during installation.

✓ EXPERT TIPS – TOOLS

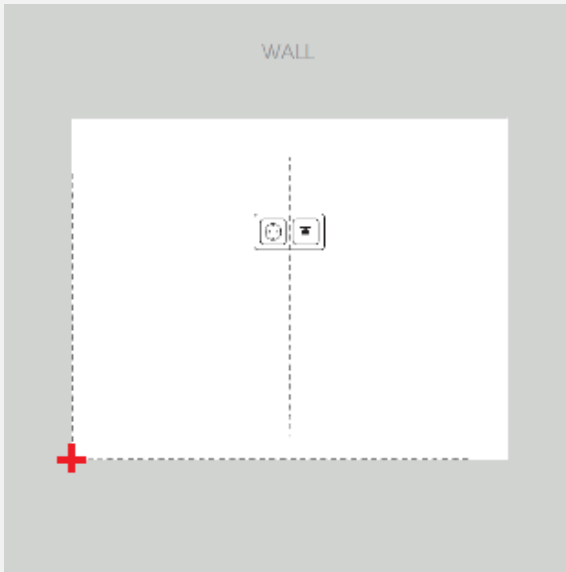
Please read the safety precautions before positioning the product. Always use the supplied wall brackets and parts. Wall mounting this product requires special skills and should only be performed by qualified personnel. Electrical connections are to be performed by a skilled technician following local regulations. Two people are required to lift and carry a product that weights more than 25kg or 55lbs. ad notam does not guarantee the efficiency of screws and dowels delivered with this product. Those may be replaced on site considering the construction environment, type of wall, product weight and positioning. ad notam bears no responsibility for improper mounting or any mounting that results in accident or injury.



Please Note:
The corners and edges of the glass are very delicate. Take care that they do not hit the wall, ceiling or floor in any way to avoid damages and split-offs.

STEP 1 - WALL PREPARATION

- The following slides explain how to identify and mark the drilling points on the wall. ad notam provides different mounting combinations. Verify your own *shop drawing page 6 (Wall View – Legend)* to identify your wall mounting option. The column Art. Description provides the description of the selected items necessary for your wall preparation.



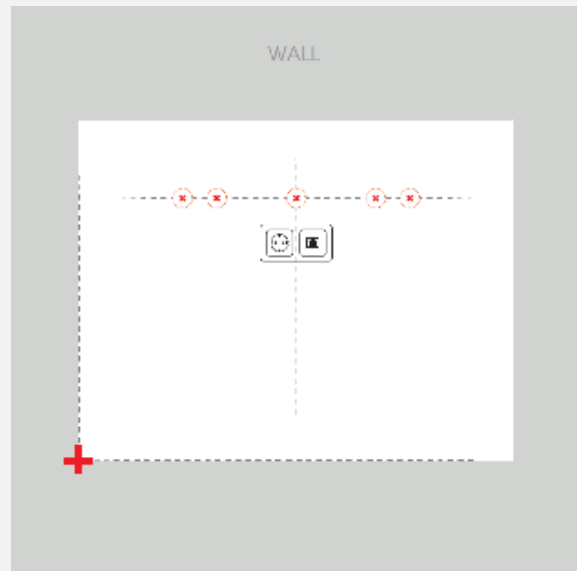
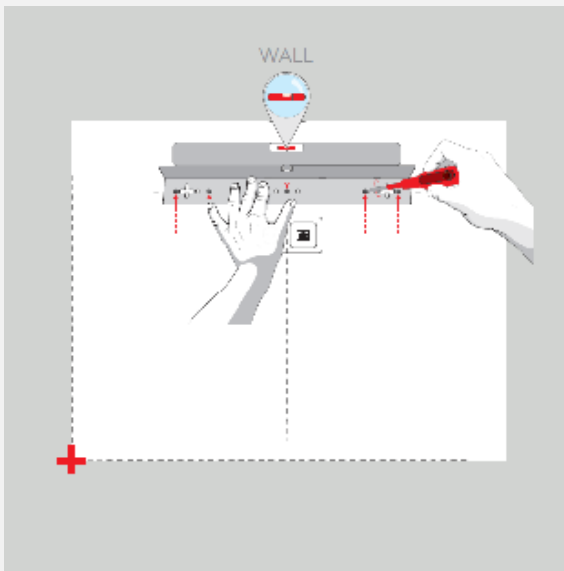
Art.	Art. Ref.	Art. Description	Unit	Quantity	Width	Height	Depth	Diameter	x-Position	y-Position
Basic Model										
A1		Magic Mirror Crystal Clear Slim	pcs	1	1500	900	5			
A12		Wall Locker Plate 36 (OWMS)	pcs	1	60	60	30		770	30
A13		Wall Metal Plate 880_36 (OWMS) (1)	pcs	1	880	68	33		800	107

Footnotes
 (1) Caution! The x/y middle-position of the Wall Metal Plate 880_36 (OWMS) is referred to the glass top left point

Weight: 27KG Depth: 41mm

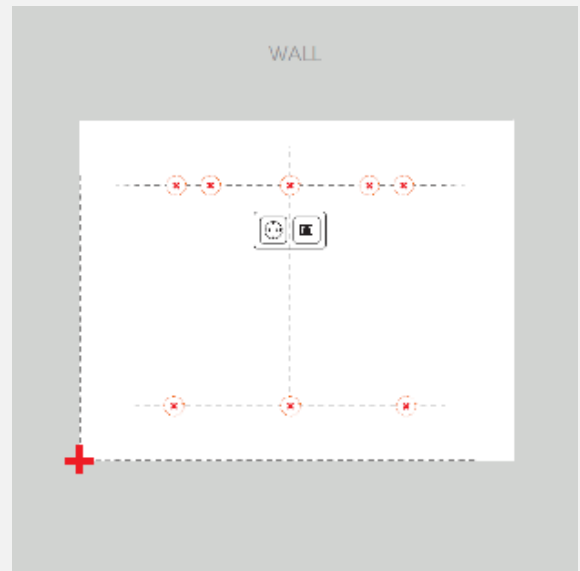
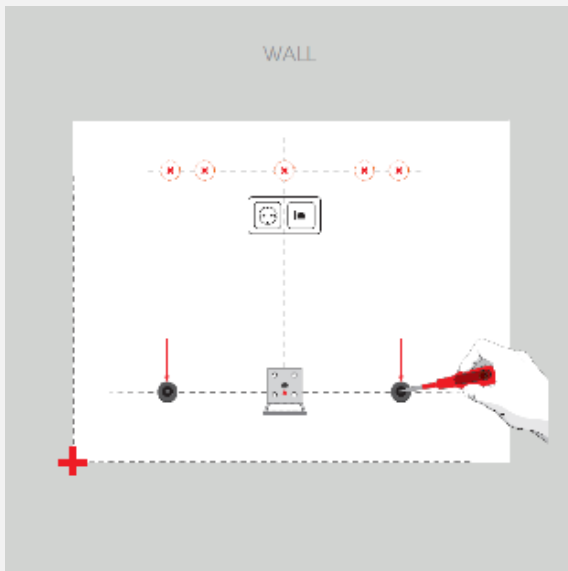
ad notam	Lighted Mirror TV	8619	LM 185 OW
mm	2014-08-25	6/8	

- Reference point. Identify your ad notam position on the wall and identify the bottom left corner of the crystal. Mark this point with the pencil.
- Reference point (Point 0) is used in the ad notam *shop drawing Wall View – Legend (Page 6)*. Drilling points coordinates are starting from here.
- Draw the axes. Identify the Vertical and Horizontal axes on the wall starting from the reference point. Use the Level to verify vertical and horizontal alignment.

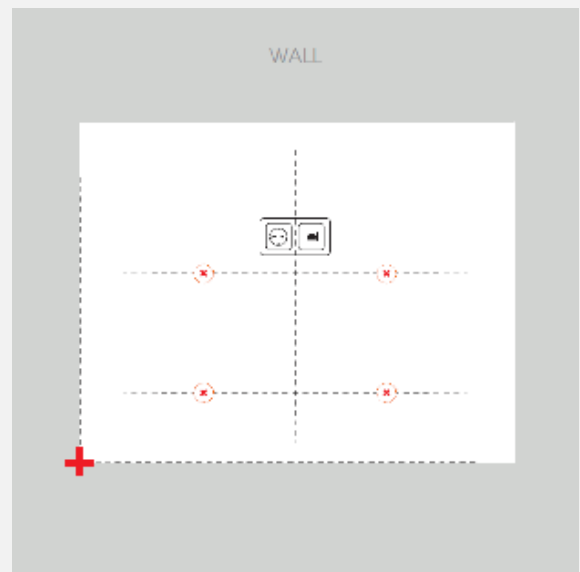
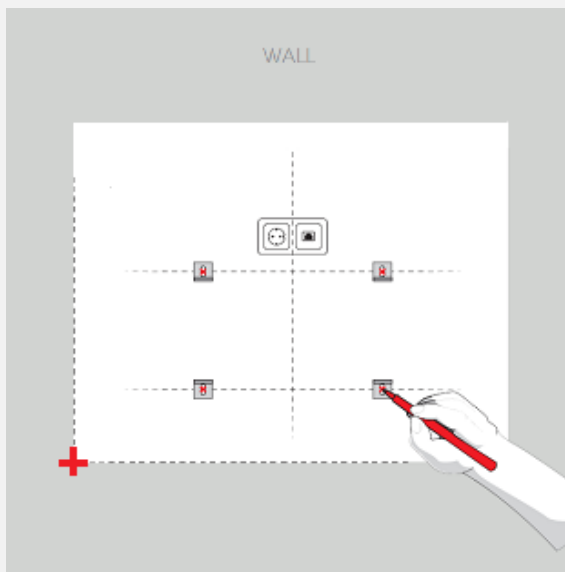


- Art. Description Verify your own configuration page 6 (Wall View – Legend) to identify your mounting option. The column provides the description of the selected items necessary for your wall preparation.
- Art. Description - WALL MOUNTING PLATE. (*Not found? Move to the next step.*) Verify y-position and x-position. These coordinates correspond to the WALL MOUNTING PLATE middle screw drilling point. Mark the point. Take the WALL MOUNTING PLATE and align the middle screw position with the marked point. Use the level to verify horizontal alignment and mark the other drilling points.

✓ WALL MOUNTING PLATE coordinates are starting from the Upper left corner.



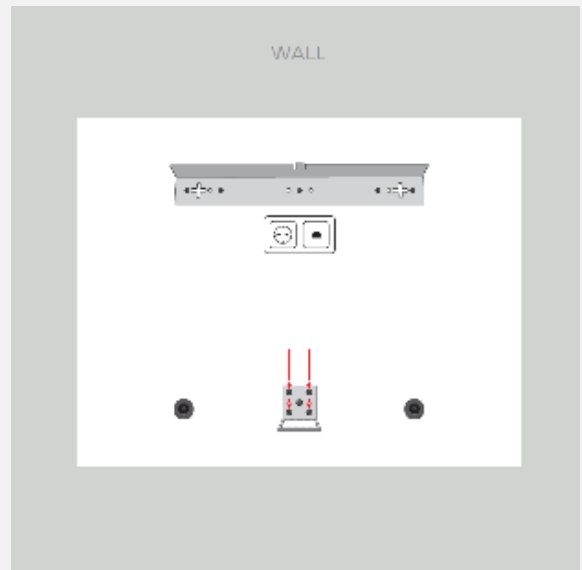
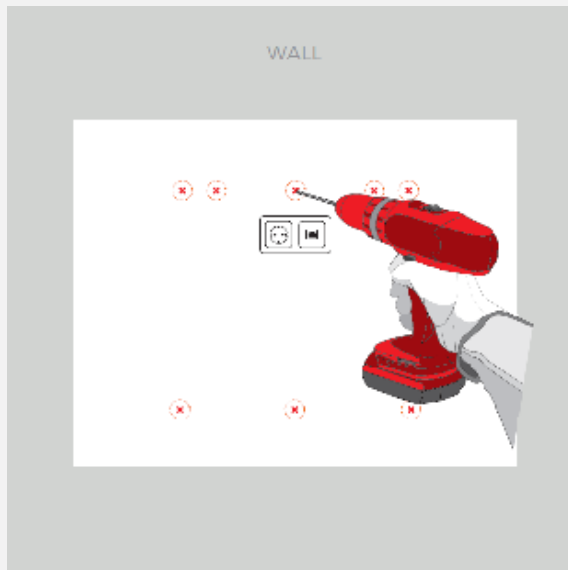
7. Art. Description - FIXATION MAGNET. *(Not found? Move to the next step.)* Verify x-position and y-position. These coordinates correspond to the FIXATION MAGNET middle screw drilling point. Start from the reference point moving upward on the vertical axis and mark the point (y-position). Plot an horizontal line verifying horizontal alignment using the level. Measure and mark the drilling point on this line according (x-position). Caution: you should have 2 or more FIXATION MAGNETS. Repeat the procedure for each one of them.
8. Art. Description - WALL LOCKING PLATE. *(Not found? Move to the next step.)* Verify y-position and x-position. These coordinates correspond to the WALL LOCKING PLATE middle screw drilling point. Start from the reference point moving upward on the vertical axis and mark the point (y-position). Plot an horizontal line verifying horizontal alignment using the level. Measure and mark the drilling point on this line according (x-position).



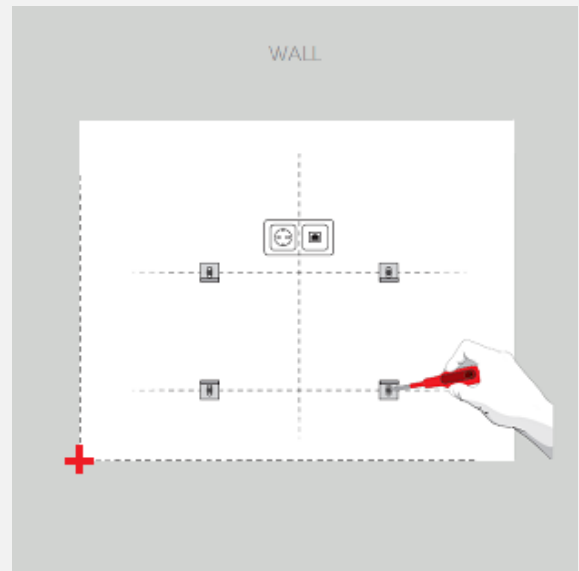
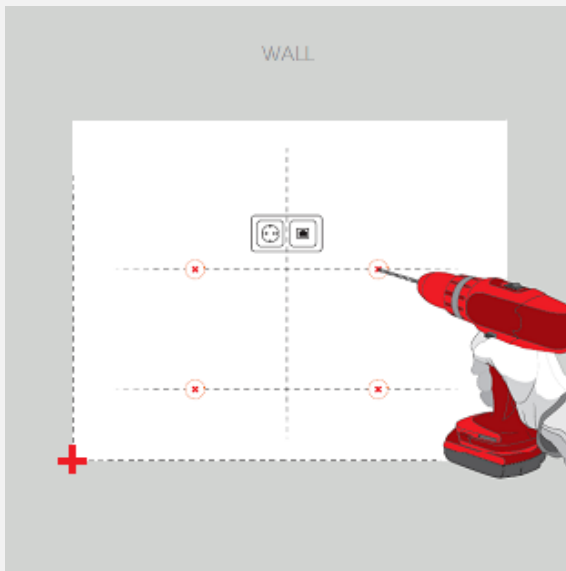
9. Art. Description - HOLDING ANGLE. *(Not found? Move to the next step.)* Verify x-position and y-position. These coordinates correspond to the HOLDING ANGLE bottom left corner. Start from the reference point moving upward on the vertical axis and mark the point (y-position). Plot an horizontal line verifying horizontal alignment using the level. Measure and position the HOLDING ANGLE accurately, mark the drilling point. Caution: you must have 4 HOLDING ANGLES. Repeat the procedure for each one of them.

STEP 2 - WALL PREPARATION

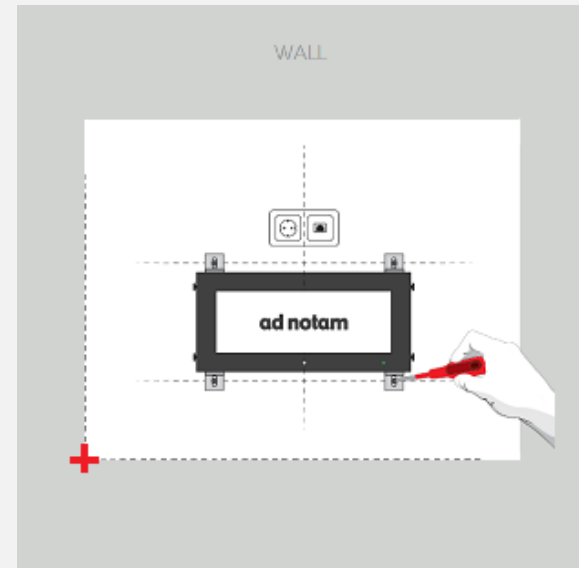
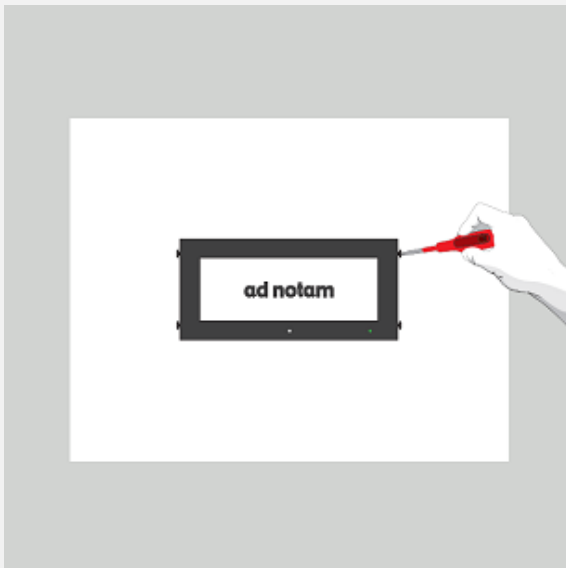
1. The following paragraphs explain how to mount the different elements on the wall. ad notam provides different mounting combinations. Verify your own *shop drawing page 6 (Wall View – Legend)* to identify your wall mounting option. The column Art. Description provides the description of the selected items necessary for your wall preparation.
 - ✓ ARCHITECTURAL Structural measures must be accomplished for an on-wall installation. ad notam declines any liability for the screws and screw anchors used on site.
 - ✓ ENVIRONMENT. ad notam mounting systems are engineered for vertical use only. Verify walls' verticality and items vertical and horizontal alignment to prevent serious injuries and product damage.
2. You marked all drilling points on the wall. Drill at the marks and proceed adding the appropriate screw anchors.



3. Art. Description Verify your own configuration page 6 (Wall View – Legend) to identify your mounting option. The column provides the description of the selected items necessary for your wall preparation.
4. Art. Description - WALL MOUNTING PLATE. *(Not found? Move to the next step.)* Secure the WALL MOUNTING PLATE starting from the middle screw. Verify other screws anchors alignment before firmly locking the first screw. Proceed with the other screws mirroring their position on the right and left side.
5. Art. Description - FIXATION MAGNET. *(Not found? Move to the next step.)* and DISTANCE RING. Secure the FIXATION MAGNETS tightening the middle screw. Verify your product depth and vertical alignment and add the DISTANCE RING.
6. Art. Description - WALL LOCKING PLATE. *(Not found? Move to the next step.)* Secure the WALL LOCKING PLATE tightening the middle screw. Feel free to add the additional screws if needed.



7. Art. Description - HOLDING ANGLE. *(Not found? Move to the next step.)* The 4 HOLDING ANGLES hold the monitor on the wall while providing slight adjustment in order to align the monitor active area with the glass image area. Marginal inaccuracy can be corrected with the long slots in the HOLDING ANGLES. Secure the 2 bottom HOLDING ANGLES firmly as shown above.



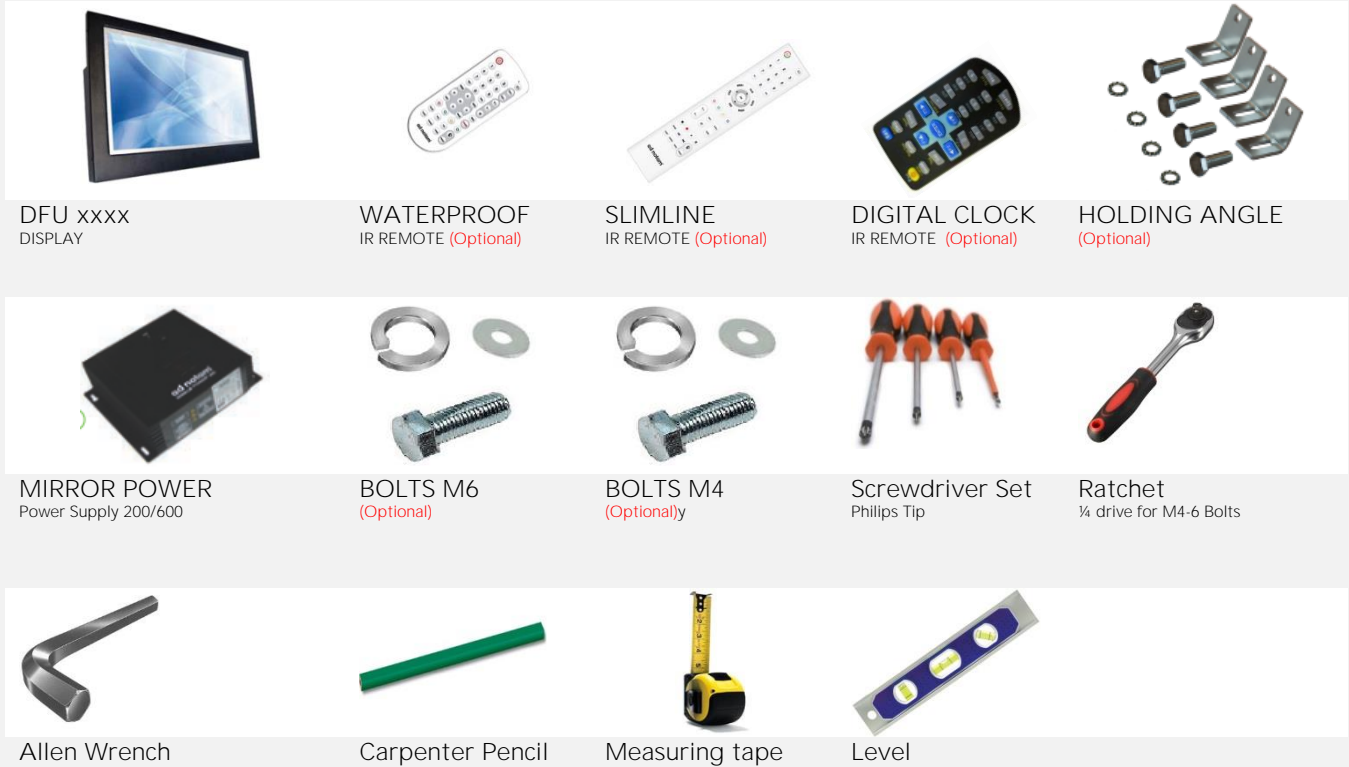
- ✓ EXPERT TIPS. Before proceeding with the 2 top HOLDING ANGLES read the screen mounting instruction for additional WARNING and EXPERT TIPS.
8. HOLDING ANGLE. *(Not found? Move to the next step.)* Drive the bolts incl. spring washers (and plain washers) half way into the injection nuts of both sides of the DFU casing. Secure the 2 top holding angles at the injection nuts of the DFU casing.
9. HOLDING ANGLE. *(Not found? Move to the next step.)* Lift your ad notam monitor and place it on the lower HOLDING ANGLES so that the injection nuts on the bottom are aligned with the holes in the HOLDING ANGLE. The holes in the upper HOLDING ANGLES should be aligned with the screw anchors. Marginal inaccuracy can be corrected with the long slots in the HOLDING ANGLES. Secure the 2 top HOLDING ANGLES firmly.

MOUNTING YOUR AD NOTAM

ON WALL MOUNTING – MONITOR

Your own ad notam has been pre-assembled according to your configuration instruction. The product back view including pre-assembled items is visible on your *shop drawing Page 3 (Back View)* you can find additional information on the visible items on *page 4 (Legend - Back View)*. The product Wall View is visible on *shop drawing page 5 (Wall View)*. Consult your *shop drawing page 6 (Legend - Wall View)* for additional information concerning spare parts necessary for installation. Refer to these pages during installation.

✓ EXPERT TIPS – TOOLS

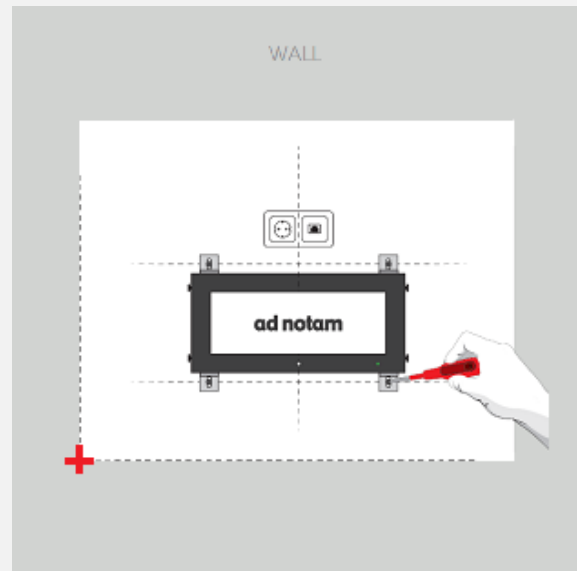
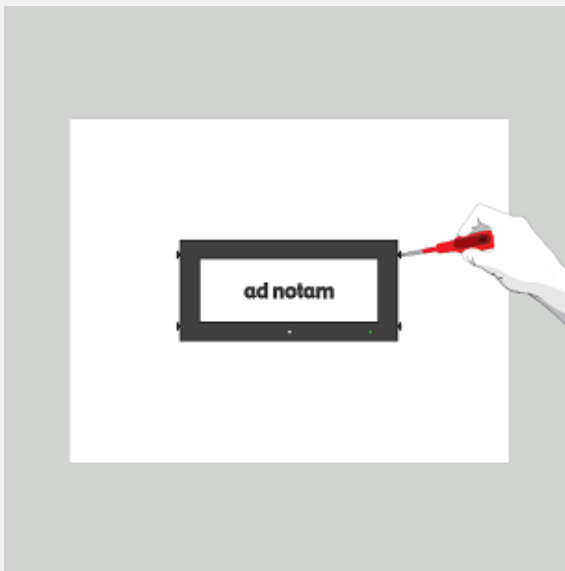


STEP 3 - MONITOR

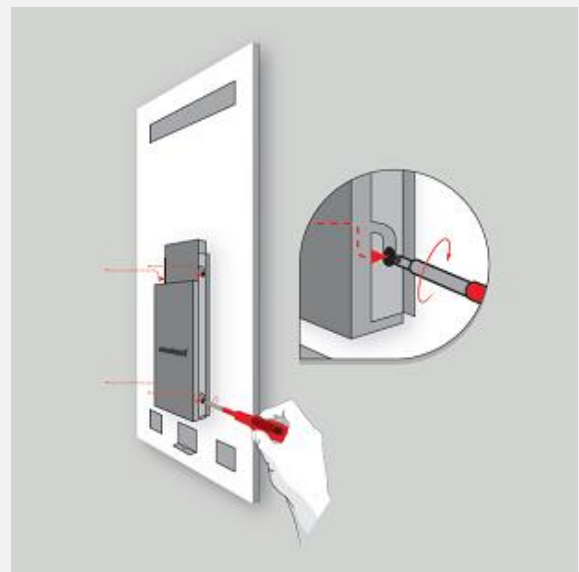
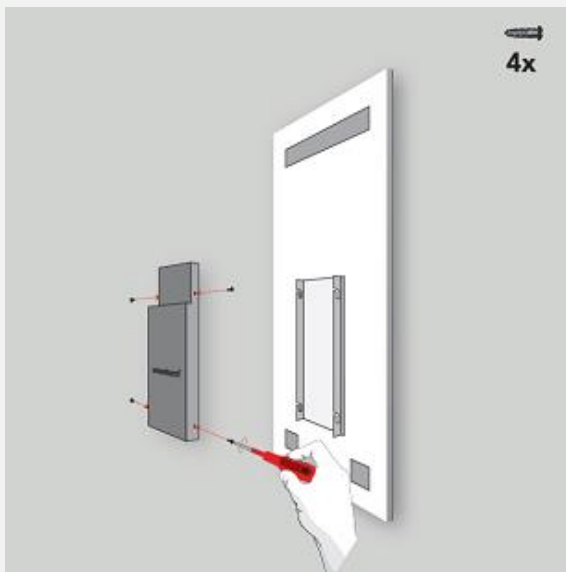
- The following paragraphs explain how to mount and connect your ad notam monitor. ad notam provides different mounting combinations. Verify your own *shop drawing page 6 (Wall View – Legend)* and *shop drawing page 4 (Back View – Legend)* to identify your monitor mounting option. The column Art. Description provides the description of the selected items necessary for your installation.
 - ✓ ARCHITECTURAL Structural measures must be accomplished for an on-wall installation. ad notam declines any liability for the screws and screw anchors used on site.
 - ✓ ENVIRONMENT. ad notam mounting systems are engineered for vertical use only. Verify walls' verticality and items vertical and horizontal alignment to prevent serious injuries and product damage.
 - ✓ ENVIRONMENT. Clean the handling and installation environments properly before installation.
 - ✓ HANDLING. Cushions the floor properly using soft anti-slip mats near the handling areas. Lay the items gently on these cushioned anti slip surfaces when needed.
 - ✓ HANDLING. Tilt the mirror and DFU top to the wall with an adequate angle of incidence when resting.
 - ✓ EXTERNAL POWER ADAPTER External power adapters require a minimum air volume to avoid overheating and proper long-lasting operations. Allow at least 10cm all around a 12V DC model or 20cm all around a 24V DC model.
 - ✓ EXTERNAL POWER ADAPTER Install the external power adapter in accessible service friendly location, if you require extension cables refer to your ad notam specialist. Install the external power adapter on a steady flat surface, do not hang nor cover.
 - ✓ ELECTRICITY. Do not overload wall outlets, extension cords or adaptors above their capacity, since this can result in fire or electric shock.
 - ✓ ELECTRICITY. Before you connect the product to the power outlet ensure that the power voltage matches the value printed on the back of the product. Never connect the product to the power outlet if the voltage is different.
- You prepared the wall marking the point and pre-installing the necessary items. After cleaning the installation environment you can proceed with the monitor test and installation.



- ✓ EXPERT TIPS. Before proceeding with the monitor handling evaluate your installation requirement. Your own unique ad notam has been pre-assembled at factory and additional items, wiring and connections need to be performed on site. Evaluate your handling clearance considering cables lengths and connections. Cushion the handling area properly using soft anti-slip mats. Lay the items gently on these cushioned anti slip surfaces when needed.
- Art. Description Verify your own *shop drawing page 6 (Wall View – Legend)* and *shop drawing page 4 (Back View – Legend)* to identify your monitor mounting option. The column Art. Description provides the description of the selected items necessary for your installation.



4. Art. Description - HOLDING ANGLE. *(Not found? Move to the next step.)* Drive the bolts incl. spring washers (and plain washers) half way into the injection nuts of both sides of the DFU casing. Secure the 2 top holding angles at the injection nuts of the DFU casing.
5. Art. Description - HOLDING ANGLE. *(Not found? Move to the next step.)* Lift your ad notam monitor and place it on the lower HOLDING ANGLES so that the injection nuts on the bottom are aligned with the holes in the HOLDING ANGLE. The holes in the upper HOLDING ANGLES should be aligned with the screw anchors. Marginal inaccuracy can be corrected with the long slots in the HOLDING ANGLES. Secure the 2 top HOLDING ANGLES firmly.



6. Art. Description – MGS (Mounting Bracket). *(Not found? Move to the next step.)* Drive the bolts incl. spring washers (and plain washers) half way into the injection nuts of both sides of the DFU casing.
 - ✓ EXPERT TIPS. The ad notam monitor can now be affixed with the connection plugs face up to the rear side of the crystal surface. Clean the crystal rear side and the monitor properly before proceeding.
 7. Art. Description – MGS (Mounting Bracket). *(Not found? Move to the next step.)* Let the monitor's locking bolts slide into the mounting brackets.
 - ✓ EXPERT TIPS. Ensure during the installation, whether the transparent image area of the glass is aligned to the monitor active area.
 - ✓ EXPERT TIPS. Ensure that the in-built Monitor IR receiver is fully exposed to incoming IR signal verifying its alignment with the transparent IR window. This misalignment might result in disability to control your ad notam.
 8. Art. Description – MGS (Mounting Bracket). *(Not found? Move to the next step.)* Secure the monitor tightening the bolts if the screen active area is aligned to the crystal image area and there are only marginal gaps between the monitor and the mounting. If there is a remarkable gap between the monitor and the MGS mounting bracket implicitly use the lock washers to fill the gap before tightening the bolts.
- ⚠ Do not overtighten the bolts in order to avoid strains. Overtightening the bolt might affect the self-adhesive tape.

MOUNTING YOUR AD NOTAM

ON WALL MOUNTING – FINAL ASSEMBLY

Your own ad notam has been pre-assembled according to your configuration instruction. The product back view including pre-assembled items is visible on your *shop drawing Page 3 (Back View)* you can find additional information on the visible items on *page 4 (Legend - Back View)*. The product Wall View is visible on *shop drawing page 5 (Wall View)*. Consult your *shop drawing page 6 (Legend - Wall View)* for additional information concerning spare parts necessary for installation. Refer to these pages during installation.

✓ EXPERT TIPS – TOOLS



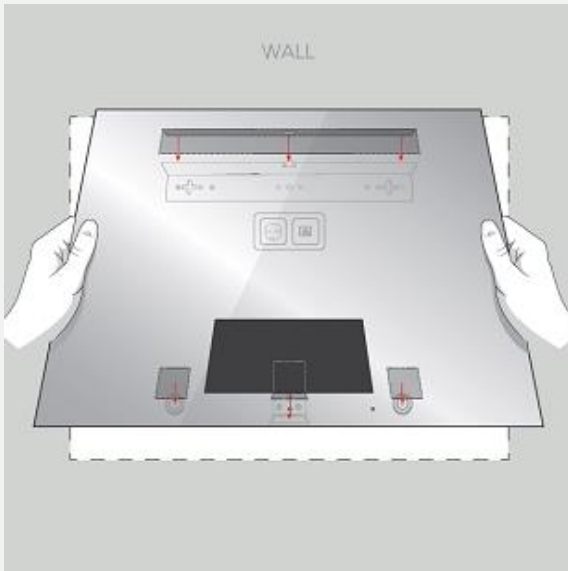
Glass Suction Cups

STEP 4 - FINAL ASSEMBLY

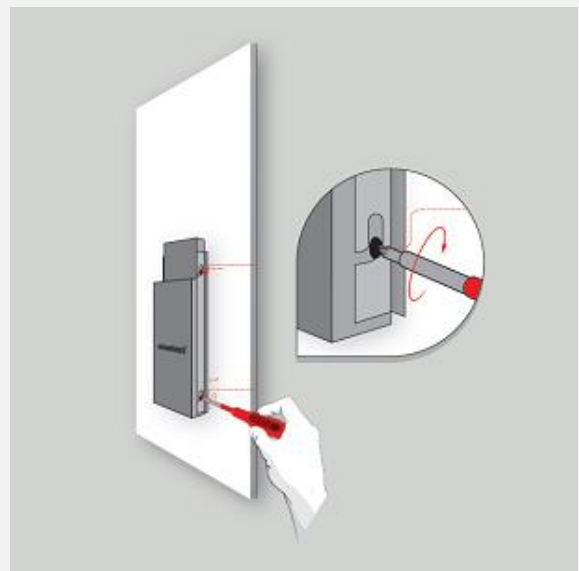
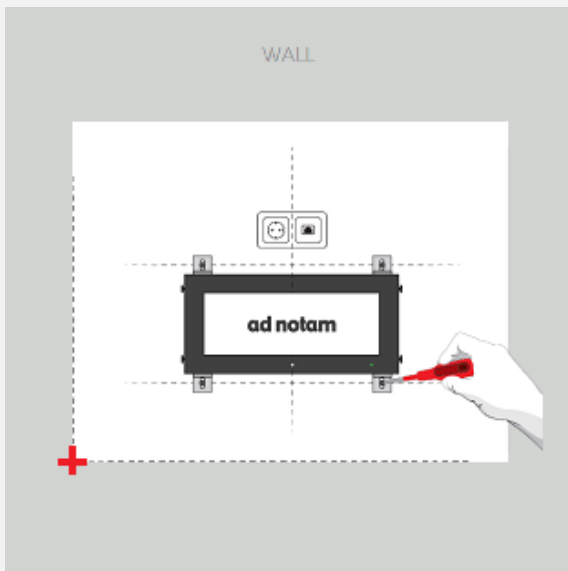
- The following slides explain how to identify, mount and secure your ad notam to the wall. ad notam provides different mounting combinations. Verify your own *shop drawing page 6 (Wall View – Legend)* and *shop drawing page 4 (Back View – Legend)* to identify your monitor mounting option. The column Art. Description provides the description of the selected items necessary for your installation.
 - ✓ ENVIRONMENT. ad notam mounting systems are engineered for vertical use only. Verify walls' verticality and items vertical and horizontal alignment to prevent serious injuries and product damage.
 - ✓ ENVIRONMENT. Clean the handling and installation environments properly before installation.
 - ✓ EXTERNAL POWER ADAPTER External power adapters require a minimum air volume to avoid overheating and proper long-lasting operations. Allow at least 10cm all around a 12V DC model or 20cm all around a 24V DC model.
 - ✓ HANDLING. Cushions the floor properly using soft anti-slip mats near the handling areas. Lay the items gently on these cushioned anti slip surfaces when needed.
 - ✓ HANDLING. Tilt the mirror and DFU top to the wall with an adequate angle of incidence when resting.
 - ✓ EXTERNAL POWER ADAPTER Install the external power adapter in accessible service friendly location, if you require extension cables refer to your ad notam specialist. Install the external power adapter on a steady flat surface, do not hang nor cover.
 - ✓ ELECTRICITY. Do not overload wall outlets, extension cords or adaptors above their capacity, since this can result in fire or electric shock.
 - ✓ ELECTRICITY. Before you connect the product to the power outlet ensure that the power voltage matches the value printed on the back of the product. Never connect the product to the power outlet if the voltage is different.
- You prepared the wall marking the points, installed the necessary items, tested and secured the monitor. After cleaning the installation environment you can proceed with the final assembly.



- ✓ EXPERT TIPS. Before proceeding with the final assembly evaluate your installation requirements. Your own unique ad notam has been pre-assembled at factory and additional items, wiring and connections need to be performed on site. Evaluate your handling clearance considering cables lengths and connections. Cushion the handling area properly using soft anti-slip mats. Lay the items gently on these cushioned anti slip surfaces when needed.
- Art. Description Verify your own *shop drawing page 6 (Wall View – Legend)* and *shop drawing page 4 (Back View – Legend)* to identify your final assembly option. The column Art. Description provides the description of the selected items necessary for your installation
 - ✓ EXPERT TIPS. Clean the crystal rear side and the monitor properly before proceeding.



4. Art. Description - WALL MOUNTING PLATE. *(Not found? Move to the next step.)* The GLASS MOUNTING PLATE (counterpart for WALL MOUNTING PLATE) is pre-mounted to the back side of the glass. Use the suction cups to elevate the crystal in order to secure the slide-in mechanism. The glass upper edge middle point is marked using a red strip, align this to the red strip on the wall to easily identify the anchor point.
 5. Art. Description - FIXATION MAGNET. *(Not found? Move to the next step.)* Gently bring the bottom part of the crystal in vertical position the magnets will pull and hold the crystal providing additional support.
 6. Art. Description - WALL LOCKING PLATE. *(Not found? Move to the next step.)* Secure the crystal on the wall screwing the locking bolt with a lock washer bottom up through the GLASS LOCKING PLATE (pre-mounted to the crystal) and WALL LOCKING PLATE.
- ✓ EXPERT TIPS. Ensure during the installation, whether the transparent image area of the glass is aligned to the monitor active area.
 - ✓ EXPERT TIPS. Ensure that the in-built Monitor IR receiver is fully exposed to incoming IR signal verifying its alignment with the transparent IR window. This misalignment might result in disability to control your ad notam.



7. Art. Description. – GMS (Glass on Monitor Mounting) *(Not found? Move to the next step.)* Let the mounting brackets (pre-mounted to the back side of the glass) slide onto the locking bolts of the monitor.
- ✓ EXPERT TIPS. Ensure that the in-built Monitor IR receiver is fully exposed to incoming IR signal verifying its alignment with the transparent IR window. This misalignment might result in disability to control your ad notam.
8. Art. Description. – GMS (Glass on Monitor Mounting). *(Not found? Move to the next step.)* Secure the glass tightening the bolts if the screen active area is aligned to the crystal image area and there are only marginal gaps between the monitor and the mounting. If there is a remarkable gap between the monitor and the GMS mounting bracket implicitly use the lock washers to fill the gap before tightening the bolts.

⚠ Do not overtighten the bolts in order to avoid strains. Overtightening the bolt might affect the self-adhesive tape.

HIGHLIGHTS - SUGGESTED SETTINGS

INSTANT ON

Your ad notam screen will power ON/OFF within 1 second. All screen settings are done via the on screen display (OSD) menu. Access this menu selecting the SETUP key. Scroll down and select "Service Settings". Position "Boot Power Option" to "Instant".

✓ EXPERT TIPS.

Use this setting when connecting a single play out unit to your device.

INPUT SCAN

Your ad notam screen will automatically power ON/OFF depending from incoming signals from your play out units.

(De)activate the automatically scan of the input ports for a valid video signal. Once there is no video signal at the currently selected input port the screen will search for a video signal on the other ports by the following sequence: HDMI 1 > HDMI 2 > > HDMI 1... and so on (See also SIGNAL LOSS TIMER)

All screen settings are done via the on screen display (OSD) menu. Access this menu selecting the SETUP key. Scroll down and select "Service Settings". Make sure that "Signal Loss Timer" is deactivated.

✓ EXPERT TIPS.

Use this setting when connecting more play out units to your device.

BACKLIGHT

Your ad notam screen's backlight is set to guarantee a satisfactory brightness in an optimal environment.

You can adjust the general brightness of the backlight choosing in a range from 20% up to 100%.

Access this menu selecting the "set up" key. Scroll down and select "Display Settings". Adjust your backlight according to your personal taste.

USB & MEDIA PLAYER

Watch your photos, listen to your music, play your movies and read your documents.

Save a movie clip on a USB and connect it to the USB Input of the screen.



Access this menu selecting the SOURCE key. Scroll down and select "USB".

Choose between PHOTO, MUSIC, MOVIE and TEXT according to the file you aim to open. Scroll with the cursor and select your file. To return press the EXIT key or press OK on selecting the Return icon. While viewing your files access the toolbar pressing the OK key.

MOVIE

File Extension	Video	Audio
.avi	Dvix,XviD,MPEG 4	
.mpg	MPEG-1/2	
.dat	MPEG-1	MP3,WMA,AAC
.mov, .mkv	H.264	

MUSIC

File Extension	Video	Audio
.mp3		MP3
.wma		WMA
.m4a/.aac		AAC

PHOTO

File Extension	Video	Audio
.jpg, .Jpeg	Progressive JPEG Baseline JPEG	
.bmp	BMP	
.png	Non-Interlaced Interlaced	

USB AUTO PLAY

Your ad notam screen will play your movie clip automatically when turning ON the device.

It can be combined with the instant on functionality.

All screen settings are done via the on screen display (OSD) menu. Access this menu selecting the SETUP key. Scroll down and select "Service Settings". Set "USB Auto Play" in the to "On" and exit the OSD.

✓ EXPERT TIPS.

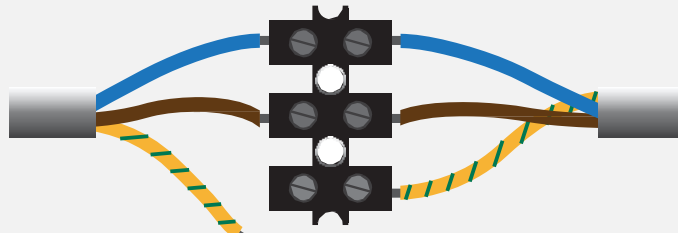
Activate and select the USB Input in the OSD menu (Read Service Settings in this manual for additional information).

CONNECT YOUR PRODUCT

POWER

LUSTER TERMINAL AND OPEN ENDED POWER CORD

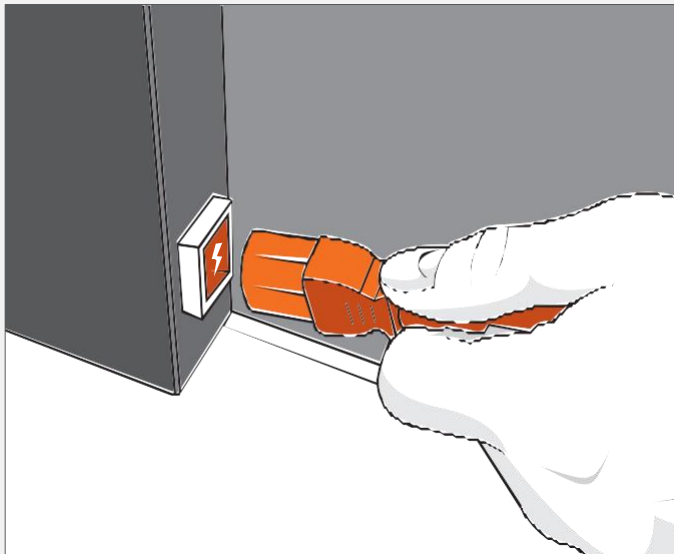
⚠ This type of electrical connections are to be performed by a skilled technician only following local electrical and safety regulations. Make sure that each product's electrical component such as screen, heating foil and lighting, have its own mains circuit. Avoid connecting them to the same mains circuit.



● blue - Neutral ● yellow/green - Earth ● brown- Live

POWER CABLE

Insert the power cable into the AC socket of the product. Make sure the power cable is securely and fully inserted. Make sure that the power plug in the wall socket is accessible at all times. When disconnecting the power cable, always pull the plug, never the cable.



SCREEN EXTERNAL POWER ADAPTER (Optional)

The product should only be operated using the provided power adapter and its power cord. Insert the DC Plug of the external power adapter into the POWER INPUT socket of your product. Make sure that the DC Plug is securely and fully inserted. Insert the power cable into the MAINS socket of the external power adapter. Make sure the power cable is securely and fully inserted on both sides. Make sure that the power plug in the wall socket is accessible at all times. When disconnecting the power cable, always pull the plug, never the cable.

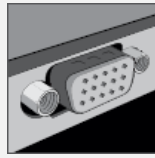
CONNECT YOUR PRODUCT

✓ EXPERT TIPS. Disconnect the mains power before connecting any of the inputs below.

AUDIO/VIDEO



HDMI 1/2/3
HDMI has the best picture and sound quality. HDMI combines video and audio signals for High Definition (HD) signals. For best signal quality transfer, use a high speed HDMI cable not longer than 5m.



VGA IN (not available for all models)
VGA is an analog video connection for PC's and laptops. Do not use for Full High Definition signals. Combine sound using LINE AUDIO input port.



COMPONENT IN (Y/PB/PR)
Component Video YPbPr is a high quality connection. The YPbPr connection can be used for High Definition (HD) signals. For sound please use the LINE AUDIO Input port.



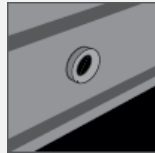
AUDIO IN (L/R)
Used with the COMPONENT IN port.



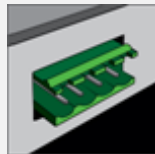
USB
You can view photos or play your music and videos from a connected USB flash drive. Insert a USB flash drive into the USB port of your product and select the USB input.

⚠ To access the USB port after installation it is highly recommended to install a USB EXTENSION CABLE.

⚠ The USB input is DISABLED by default. Use On Screen Display (OSD) menu (SERVICE SETTINGS) in order to activate it.



AUDIO OUT (not available for all models)
Use this output to connect an external audio power amplifier or amplified loudspeakers. This output is working in parallel with the speaker out port and follows the screen's volume level changes.



SPEAKER OUT
Two external speakers can be connected to the SPEAKER OUT port using speaker cables. Please make sure your speakers impedance is 8 Ohm and the + and - wiring is correct.

CONNECT YOUR PRODUCT

✓ EXPERT TIPS. Disconnect the mains power before connecting any of the inputs below.

EXTERNAL CONTROL



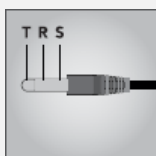
IR IN

An external IR receiver might be needed in some applications. Once needed please connect it to the IR In port.



IR OUT2 (LED)

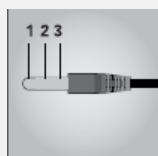
An external IR emitter might be needed in some applications. This output will loop-through all IR signal received by the built-in IR receiver and will allow controlling external devices. Once needed please connect it to the IR out (LED) port.



Connection Diagram

T	Signal
R	GND
S	GND

⚠ When an external IR Receiver is connected to the IR In port, the screen's built in IR receiver is disabled. Use only the IR receiver supplied with your product. Using other IR receiver may damage your product.



Connection Diagram

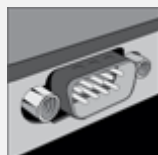
1	+5V
2	Signal
3	GND

⚠ Use this port once the external device is equipped with an IR Input socket. Due to lack of standard for IR cable connection please consult with your external device provider for compatibility before making any connection.



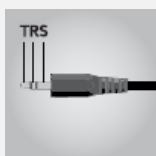
IR OUT 1 (CABLE)

An external IR emitter might be needed in some applications. This output will loop-through all IR signal received by the built-in IR receiver and will allow controlling external devices. Once needed please connect it to the IR out (CABLE) port.



RS232

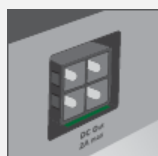
The RS232 port can be used by external devices (eg. home automation). IR commands received by in-built IR receiver generate a feedback string for RS 232. RS232 default baud rate is 34800. For more info visit our website at: www.ad-notam.com



Connection Diagram

T	not used	T
R	Signal	R
S	GND	S

⚠ Use this port once the external device is equipped with an IR receiver. Locate its position and attach the IR emitter in front of it. Use only the IR emitter supplied with your product. Using other IR emitter may damage your product.



DC OUT (5V/12V) (not available in all models)
Use this output to feed DC power to SINGLE external payout devices (DTB, IPTV, etc.)

⚠ Use on screen display (OSD) menu (SERVICE SETTINGS) in order to (de) activate this port.

⚠ The DC OUT port is designed to be used with SINGLE payout device. Never connect more than one device.

⚠ The DC OUT port will feed 5VDC or 12VDC device with 2A MAX. Never connect a device whose power differs from the above specifications.

USE YOUR SCREEN



SWITCH ON/OFF

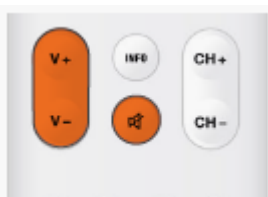
Make sure you plugged in the mains power on the back of your product or to the external power adapter before trying to switch ON. Make sure your remote is equipped with batteries and that its LED indicator is lighting once a button is pressed. Once power is applied to your screen it will first power to STANDBY mode and its front status LED will turn red. Once turned ON the status LED will change color to green, the boot logo will appear and the last selected INPUT SOURCE will be displayed. Use you remote's power key to toggle between ON and STANDBY mode.



SELECT SOURCE

With the remote's source key you can open the on- screen INPUT SOURCE list and switch to your desired source using the up and down cursor keys followed by the OK key. In order to close the on-screen INPUT SOURCE list without changing your current source please press the exit key.

⚠ The INPUT SOURCE list will show only ENABLED inputs. By factory default the USB input is DISABLED. In order to have more info on how to enable and disable inputs please refer to the SETTINGS section in this manual.



ADJUST THE VOLUME AND MUTE

In order to adjust the sound volume please use the volume up and volume down keys. The mute key will toggle between mute mode (no sound) and un-mute mode (restores last volume level). Once in mute mode amute icon will be displayed on screen.



SCREEN SLEEP TIMER

With the sleep timer, you can set the screen to switch to STANDBY automatically after a preset time.

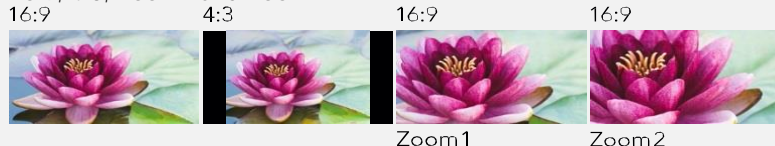
To set the sleep timer press the sleep key to toggle between the following presets: OFF, 15min, 30min, 45min, 60min, 90 min and 120min. You can always switch off your screen earlier during the timer countdown.



CHANGE IMAGE FORMAT

Adjust the image format to suit your preference using the **aspect** button. The aspect ratio presets are:

16:9, 4:3, Zoom1 and Zoom2.



USB MEDIA PLAYBACK

The playback keys are used to control the media player assigned to the USB port. Those keys are available only in our **SLIMLINE IR REMOTE** model.



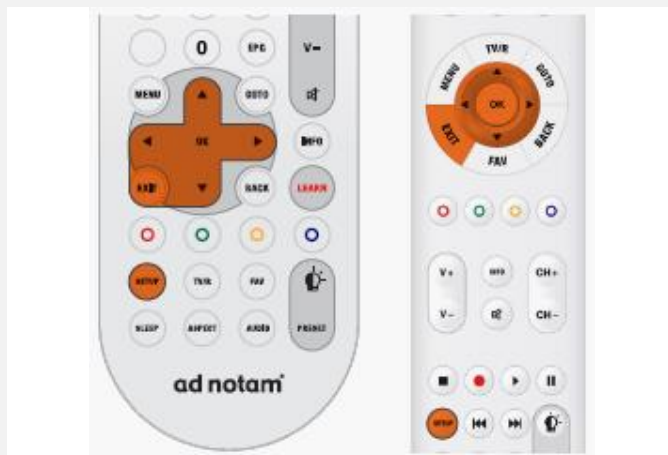
ON SCREEN DISPLAY (OSD MENU)

ON SCREEN DISPLAY (OSD) MENU

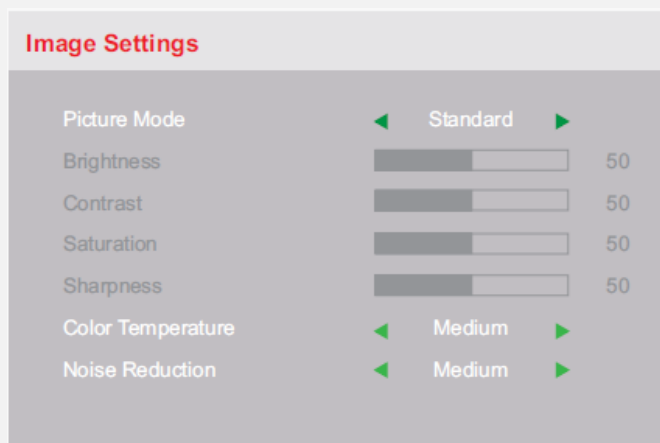
All screen settings are done via the on screen display (OSD) menu. To access this menu please use the setup key. The OSD menu includes settings for: Image, Display, Audio, OSD, Setup and Service.

OSD NAVIGATION

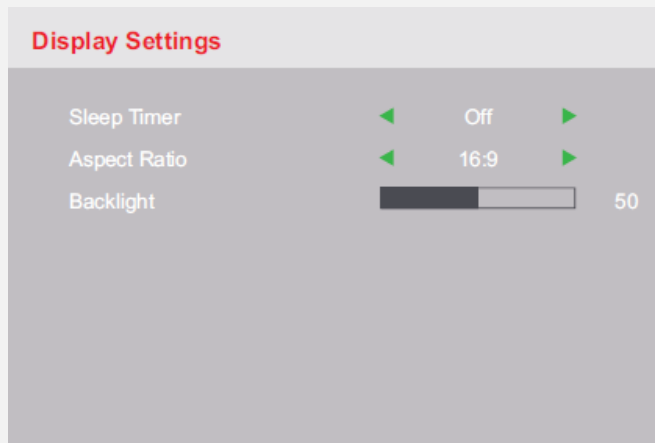
The up, down, left and right keys are used in order to navigate within the OSD menu. To change settings use the left and right keys. To go back one step use the setup key. To confirm use the OK key. To close the OSD menu use the exit key.



SCREEN IMAGE SETTINGS



DISPLAY SETTINGS



PICTURE MODE

Define the picture mode, choose from standard, dynamic, mild or user. In user mode the settings for brightness, contrast, saturation and sharpness may be adjusted manually.

NOISE REDUCTION

Define the noise reduction, choose from off, low, medium or high.

COLOR TEMPERATURE

Define the color temperature, choose from cool, medium or warm.

SLEEP TIMER

Determine a time span after that the screen should turn off automatically, choose from off, 15min, 30min, 45min, 60min, 90min or 120min.

BACKLIGHT

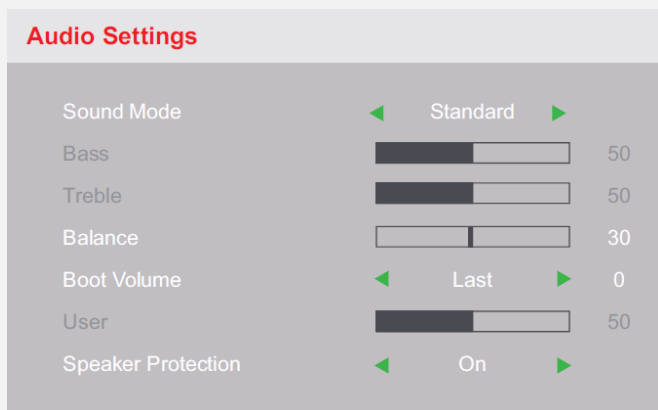
Adjust the general brightness of the backlight, choose from 20% up to 100%.

ASPECT RATIO

Define the image aspect ratio, choose from 16:9, 4:3, Zoom 1 or Zoom 2.

ON SCREEN DISPLAY (OSD MENU)

SCREEN AUDIO SETTINGS



SOUND MODE

Define the sound mode according to your preferences, choose from standard, music, movie, sports or user. In user mode the settings for bass and treble may be adjusted manually.

BALANCE

Adjust the balance between the left and the right speaker, choose from -50 (totally left) to +50 (totally right).

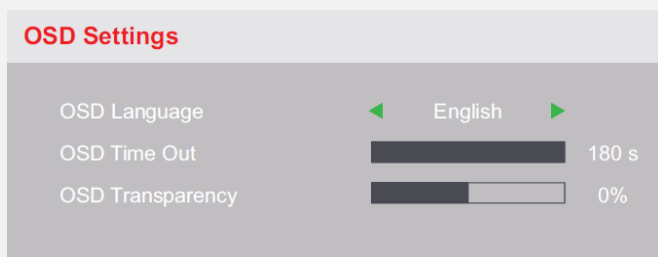
BOOT VOLUME

Define a volume range at startup when your screen is switched ON, choose from last or user. In user mode the startup volume level can be manually defined between 0% (no sound) up to 100% (full volume level).

SPEAKER PROTECTION

(De)activate the speaker protection that limits a quick increase in volume to be passed on to the speaker output port in order to prevent damages to the speakers.

SCREEN OSD SETTINGS



OSD LANGUAGE

Define the OSD menu language; choose from English, Español, Français, Deutsch, Português, Italian.

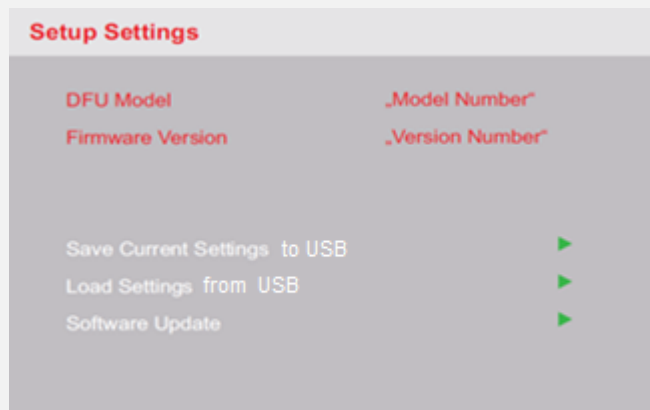
OSD TRANSPARENCY

Set the transparency of the OSD menu; choose from 0%, 25%, 50% or 75%.

OSD TIME OUT

Determine a time span after that the OSD menu fades out automatically; choose from 15s, 30s, 60s or 180s.

SCREEN SETUP SETTINGS



SAVE CURRENT SETTINGS TO USB

Transfer your individual device settings to a USB stick. Connect a USB stick to the corresponding input of the Screen. Select "save current settings to USB" and confirm "Save settings?" with "Yes".

LOAD SETTINGS FROM USB

Load previously saved device settings from a USB stick. Connect a USB stick to the corresponding input of the Screen. Select "Load Settings from USB" and confirm "Overwrite existing settings?" with "Yes". This will discard your current settings.

SOFTWARE UPDATE

Use this feature in order to update the screen's software (firmware) version via a connected USB flash drive.

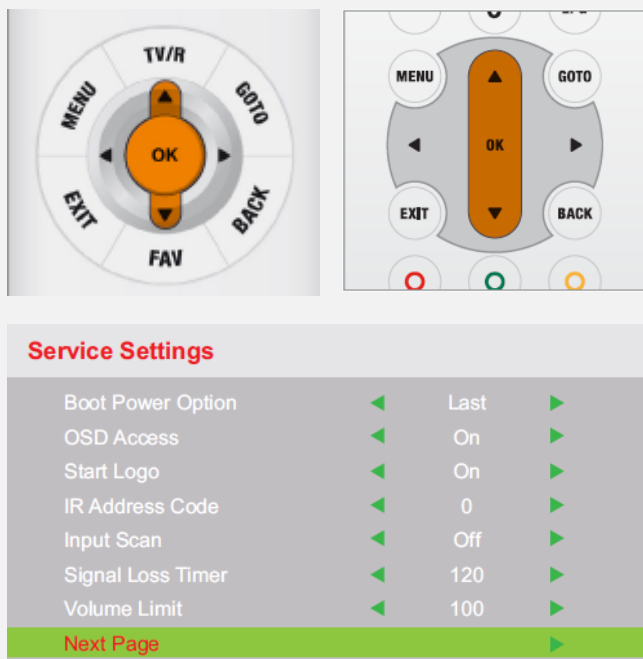
⚠ Please make sure that the software file on the USB flash drive is the correct version for your screen. Please notice that every screen size has dedicated software file. Once there is no USB flash drive connected, an error message will appear: Can't detect USB.

⚠ In order to have access to the USB port after installation it is highly recommended to install a USB EXTENSION CABLE

SERVICE SETTINGS

Service settings are password protected and normally should be used by an authorized technician only. The SERVICE SETTINGS parameters are spread over multiple menu pages.

- ⚠ The default password for the service settings menu is "1234", this may be modified within the SERVICE SETTINGS menu. Please notice that the password digits should NOT be entered using the numeric keys on your remote control! Please use up and down keys to change a digit followed by the OK key to confirm.



IR ADDRESS CODE

In order to control a single screen in a multi-screen installation both the screen and the IR REMOTE are needed to be set up for a dedicated IR address, otherwise a single remote will affect all screens. You can set a unique IR address code for the screen according to your preferences, choose from value of "0" up to "254". The default (master) IR address code is "0". To set an IR address on a Waterproof IR Remote please press and hold both learn and power keys simultaneously until the remote's LED indicator lights constantly. While the LED indicator lights constantly press and release a sequence of 3 numeric keys matching your new IR address (address codes "000" to "254" are available).



BOOT POWER OPTION

Determine the recovery power mode of the screen after a power interruption, choose from Last, Standby, Power On or Instant.

OSD ACCESS

(De)activate the ability to see the OSD menu once setup key is used. NEVER set this parameter to OFF unless you are provided with a special service password by ad notam

- ⚠ If the OSD menu is set to OFF (deactivated), users will not be able to access the OSD menu anymore without a special service password! This special service password will be provided by ad notam to an authorized technician only upon a written request.

START LOGO

(De)activate the "ad notam" start-up logo that shows on booting.

INPUT SCAN

(De)activate the automatically scan of the input ports for a valid video signal. Once there is no video signal at the currently selected input port the screen will search for a video signal on the other ports by the following sequence:

HDMI 1 > HDMI 2 > HDMI 3 > Component > HDMI 1... and so on (See also SIGNAL LOSS TIMER).

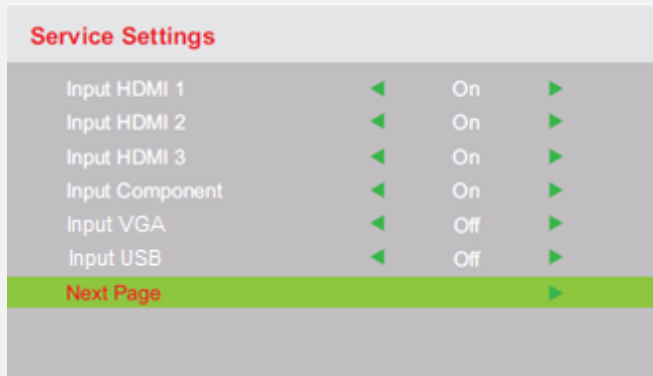
SIGNAL LOSS TIMER

Set a time span for how long the input scan should be performed once a video signal is not present on current selected input port. Choose from 5s, 10s, 30s, 60s or 120s

The screen will switch to STANDBY mode if no video signal is present within the chosen time. If signal loss timer is set OFF the search will continue indefinitely or until a signal is present again.

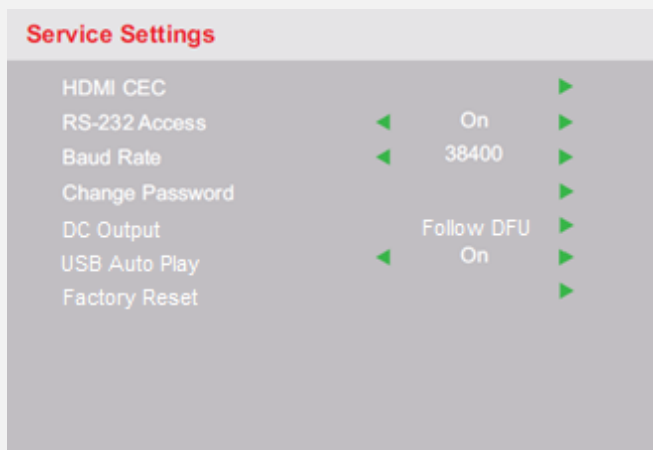
VOLUME LIMIT Determine the maximum volume level value, choose from value 0% (no sound) up to 100% (full volume level).

SERVICE SETTINGS



INPUT HDMI 1
INPUT HDMI 2
INPUT HDMI 3
INPUT COMPONENT
INPUT VGA
INPUT USB

Enables or disables the selected input port. Once an input port is set OFF it will not be accessible in the INPUT SOURCE list activated by the source key. Please notice that if the USB input port is set OFF it will not affect the software update functionality as it is always possible.



HDMI CEC
(De)activate the HDMI CEC functionality of the screen. Watch the device list of connected compatible devices and (de)activate the auto standby function.

RS232 ACCESS
(De)activate the RS-232 functionality. With RS-232 communication the screen can be integrated with external systems like home automation control system, building management control systems or hospitality TV systems. For more information regarding the RS232 protocol for this product please visit our website at: www.ad-notam.com.

BAUD RATE
Set the screen's RS232 communication baud rate to your preferred value, choose from 9600, 19200 or 38400. By default the baud rate is 38400.

CHANGE PASSWORD
Use this feature to change the password allowing access to the SERVICE SETTING menu pages.

DC OUTPUT
Use this feature to feed DC power to SINGLE external playout devices (DTB, IPTV, etc.) . Select Follow DFU to provide 5V or 12V to your external playout device.

⚠ Uses on screen display (OSD) menu, (SERVICE SETTINGS), in order to (de)activate this port.



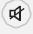


⚠ The DC OUT port is designed to be used with SINGLE playout device. Never connect more than one device.

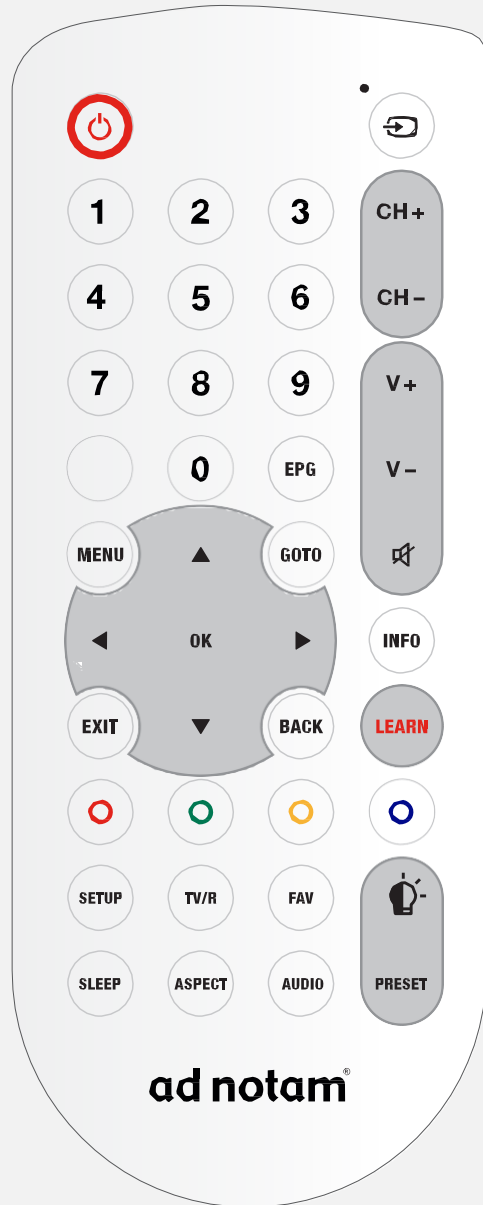
⚠ The DC OUT port will feed 5VDC - 12VDC device having 2A MAX. Never connect a device that uses power that differs from the above specifications.

USB AUTO PLAY
Use this feature to play your movie automatically when restarting the screen.

FACTORY RESET
This will restore all screen settings to the factory default settings.

USING YOUR WATERPROOF IR REMOTE CONTROL

-  Switching on / off – in ready operation Select signal input
-  **Digits 0 – 9** Select TV program directly ●
In the menu: enter numbers
- CH +** Switch between TV channels up ●
- CH –** Switch between TV channels down ●
- V +** Increase volume
- V –** Decrease volume
- TXT** Open / close teletext ●
- EPG** Electronic program guide (only DTV channels) ●
- MENU** Open / close OSD menu ●
In the menu: cursor up
- GOTO** GOTO ●
-  Mute, sound on / off
In the menu: cursor left, decrease values
- OK** OK – confirm selection
In the menu: cursor right, increase values
- INFO** Channel information / Operation guide ●
- EXIT** EXIT
In the menu: cursor down
- BACK** Previous channel ●
- LEARN** Learn individual commands
-  In the menu: color buttons ●
- SETUP** OSD menu of the DFU monitor system
- TV/R** Switch between TV and radio ●
- FAV** Open / close favorites list ●
-  Dimmer on / off ●
- SLEEP** Sleptimer
- ASPECT** Aspect ratio
- AUDIO** Select audio mode and audio track
- PRESET** Scene 1 on the Dimmer RCU ●



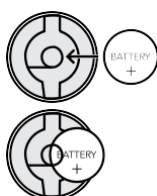
- functions used for ad notam Set Top Box solutions
- functions used for ad notam lighting solutions

BATTERIES

Please replace the batteries if your remote signal is weak. Make sure that battery is inserted with the right +/- polarity marking. The battery cover needs to be completely closed in order to preserve the remote's waterproof capabilities.



Observe that the contact clip (+) is connected correctly to the plus pole of the battery.
If the contact clip is positioned under the battery, the remote control will not work.



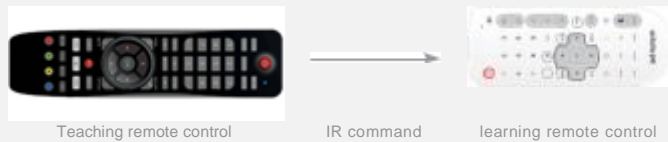
Risk of swallowing batteries! The WATERPROOF IR remote control contains a coin-type battery, which can be swallowed. Keep the battery out of reach of children at all times! Dispose of batteries according to environmental directives.

HOW TO PROGRAM

It is possible to program every single key (except for the learn key itself) of the learnable WATERPROOF IR remote control.

STEP 1

Place the WATERPROOF IR remote control (learning) and your external device remote control (teaching) head to head, approximately 30cm apart, as shown below:



STEP 2

To enter the learn mode press and hold the learn key until the LED indicator lights constantly. Please note: With no action for more than 30 seconds the remote control will exit learn mode automatically.

STEP 3

Press and release a key you wish to program on the learnable WATERPROOF IR remote. The LED indicator will still light constantly.

STEP 4

Press and release a key you want to capture on the teaching remote. The LED indicator will start to blink slowly indicating the IR command has been captured.

STEP 5

To save this IR code press and release the key you've just choose to program on the learning remote. The LED indicator will blink fast and then light constantly to indicate this IR code has been saved.

STEP 6

To program more keys please repeat steps 3 – 5 while in learn mode.

STEP 7

To exit learn mode please press and release the learn key again. The LED indicator will turn off.

RESET THE REMOTE

In order to reset all keys to ad notam factory default IR commands please follow the next steps:








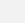



STEP 1

Press and hold the learn and power keys simultaneously until the LED indicator lights constantly.

STEP 2

Enter the code 999 by Press and release the numeric 9 key three times. The LED indicator will turn off and the remote control has been reset to the initial IR codes.

USING YOUR SLIMLINE IR REMOTE CONTROL

	Switching on / off – in ready operation
	Select signal input
Digits 0 – 9	Select TV program directly ● In the menu: enter numbers
TXT	Open / close teletext ● EPG Electronic program guide (only ● DTV channels)
MENU	Open / close OSD menu ●
EXIT	EXIT
TV/R	Switch between TV and radio ●
FAV	Open / close favorites list ●
GOTO	GOTO ●
BACK	Previous channel ●
	In the menu: cursor left, decrease value
	In the menu: cursor up
OK	OK – confirm selection
	In the menu: cursor down
	In the menu: cursor right, increase
	value In the menu: color buttons ●
V +	Increase volume
V –	Decrease volume
	INFO Channel information / ●
	Operation guide Mute, sound on / off
CH +	Switch between TV channels up ●
CH –	Switch between TV channels down ●
	Media Player functions
SETUP	OSD menu of the DFU monitor system
SLEEP	Sleeptimer
ASPECT	Aspect ratio
AUDIO	Select audio mode and audio track
	Dimmer on / off ●
PRESET	Scene 1 on the Dimmer RCU ●




● functions used for ad notam Set Top Box solutions

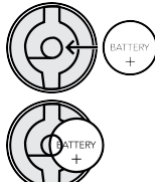
● functions used for ad notam lighting solutions


BATTERIES

Please replace the batteries if your remote signal is weak. Make sure that battery is inserted with the right +/- polarity marking. The battery cover needs to be completely closed in order to preserve the remote's waterproof capabilities.



Observe that the contact clip (+) is connected correctly to the plus pole of the battery. If the contact clip is positioned under the battery, the remote control will not work.

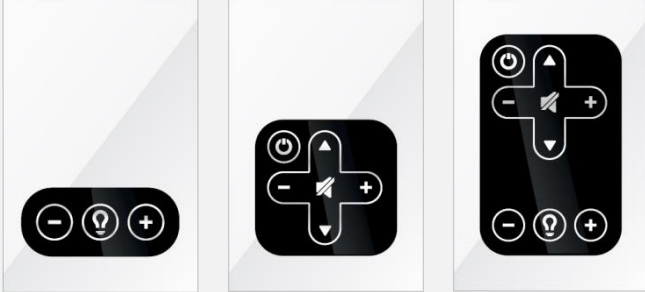




Risk of swallowing batteries! The WATERPROOF IR remote control contains a coin-type battery, which can be swallowed. Keep the battery out of reach of children at all times! Dispose of batteries according to environmental directives.

USING YOUR TOUCHPAD (OPTIONAL)

Integrated into the glass or mirror surface the touch keypad provides a totally waterproof and vandalism-resistant interface solution to control the basic functions of the screen and a set top box. There are 3 different touchpad designs based on your type of product and functionality.



SCREEN ON/OFF

Use the power key to toggle screen power between ON and STANDBY mode.



ADJUST THE VOLUME AND MUTE

In order to adjust the sound volume of the screen please use the (+) and (-) keys. The mute key will toggle between mute mode (no sound) and un-mute mode (restores last volume level).



SET-TOP-BOX CHANNEL UP/DOWN

Once your product is equipped with ad notam' s set-top-box (Optional) use the up and down keys to control the channels.



LIGHTING ON/OFF

Once your product is equipped with a lighting dimmer use the lighting key to toggle screen power between ON and OFF mode.



LIGHTING DIM UP/DOWN

Once your product is equipped with a lighting dimmer use the lighting (+) and (-) keys to set the lighting brightness. A short touch will change the brightness in one step while a long touch will change the brightness continuously till your release.



ADJUSTING YOUR DIGITAL CLOCK (OPTIONAL)

The digital clock features bright white LED digit design, and can be combined with any of the ad notam glass and mirror options for a cool complete glowing look. A backup battery provides power to the digital clock when the primary source of power is interrupted or unavailable.



DISPLAY ON/OFF

Use the power/esc key to toggle the clocks display between ON and OFF mode.



SETTING TIME USING NUMERIC KEYS

You can set the time of the digital clock by using the numeric keys on the remote. To do so please follow the following steps:

STEP 1

Press the time key to enter the time setting mode.



STEP 2

Press the numeric keys in a sequence representing the desired time. For example to set the clock to 14:35 please press the numeric keys in the following order: 1, 4, 3 and 5.



In order to exit the time setting mode, at any time, WITHOUT saving your changes please press the power/esc key.

SETTING TIME FORMAT (12H/24H)

You can choose the time format between 12 hours and 24 hours display. To do so please follow the following steps:

STEP 1

Press the edit key to enter the format setting mode.



STEP 2

Press the up or down keys to change the time format display.

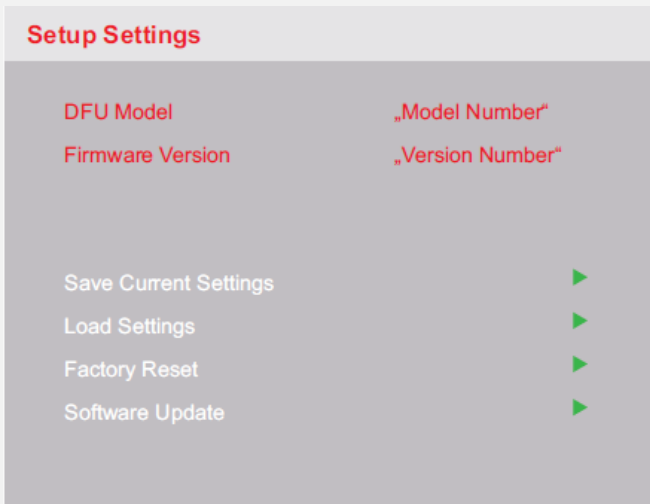


STEP 3

Press the enter key to confirm your changes and exit format setting mode.



SOFTWARE



SOFTWARE VERSION

To view the current screen software version, press setup and move down to Setup Settings page.

SOFTWARE UPDATE

To update the current screen software version, please perform the following steps:

STEP 1

Check your Firmware Version in the OSD menu in Setup Settings/Firmware Version. The screen Model and Firmware Version Info indicate the name of the device and the version of the installed Firmware.

STEP 2

Download the current Firmware Version for your screen from our website at:

www.ad-notam.com

STEP 3

Save the current Firmware Version file on an empty USB flash driver

⚠ Please make sure that the software file on the USB flash drive is the correct version for your screen. Please notice that every screen size has a different software file.

STEP 4

Connect the USB flash drive to the USB socket. In the OSD menu>Setup Settings please select Software Update. The confirmation window will be presented as below.



STEP 5

Choose Yes to start the Firmware Update process. The update progress window will be presented on screen.



STEP 6

Check if the new Firmware Version is correctly shown in the Setup Settings page.

STEP 7

IMPORTANT – Disconnect the USB flash drive

ad notam[®]

MAGIC
MIRROR[®]

MIRROR IMAGE[®]

ad notam[®], MIRROR IMAGE[®] and MAGIC MIRROR[®] are licensed trademarks of ad notam.



HDMI, the HDMI logo and high definition multimedia interface are trademarks of HDMI Licensing LLC.

This product, parts, components and the assembly are protected by or might be part of one or more of the following intellectual property rights:

US 7455412 B2
US 7589893 B2
EP 1168285 B2
EP 1429308 B2
EP 1809828 B1

The image shows the ad notam logo, which features a large stylized "C" and "E" symbol to the left of the text "ad notam". The text "ad notam" is in a bold, sans-serif font. Above the text is a circular emblem with "PS" inside and "Certified" below it, with "EU" and "US" in the top and bottom of the circle respectively.

HIDDEN TECHNOLOGY – TECHNOLOGY BECOMES INVISIBLE.

To solve any ad notam product related problem, you can consult our online support. You can select your language and enter your product model number.

Go to www.ad-notam.com

SERVICE & SUPPORT

Warranty terms apply
Damaged goods terms apply
RMA procedure terms apply

For more detailed info please visit our website at:
www.ad-notam.com

CONTACT INFORMATION

ad notam AG
www.ad-notam.com

Copyright © 2015 by ad notam. All Rights Reserved.

This Manual, as a whole, in part or excerpts, may not be reproduced, copied, stored in data retrieval system or transferred electronically, mechanically or in any other way, shape or form without prior written authorization by ad notam.

Specifications of the ad notam products are subject to unannounced changes. This manual may thus not reflect the current technical status of ad notam's product.