

ad notam[®]

HIDDEN TECHNOLOGY – TECHNOLOGY BECOMES INVISIBLE.

LIGHTED
MIRROR



OWNER'S MANUAL

INSERT

For In Wall Installation

Register your product and get support at: www.ad-notam.com

INTRODUCTION

Thank you for choosing ad notam.

You acquired a high-quality product; ad notam means supreme technology and design.

CONTENT

• SAFETY	3
• WARNINGS	4
• CLEANING AND PRODUCT CARE	5
• ENVIRONMENTAL	5
• AD NOTAM CONFIGURATOR	6
• PRODUCT DELIVERY	7
• MOUNTING YOUR AD NOTAM	8
- <i>IN WALL MOUNTING - WALL PREPARATION</i>	9
- <i>IN WALL MOUNTING - FINAL ASSEMBLY</i>	13
• CONNECT YOUR PRODUCT	15
• USING YOUR TOUCHPAD	16
• USING YOUR DIMMER REMOTE CONTROL	17
• ADJUSTING YOUR DIGITAL CLOCK	18
• COPYRIGHTS, LICENCES & CERTIFICATES	19
• TROUBLESHOOTING	19
• SERVICE & SUPPORT	19
• CONTACT INFORMATION	19

SAFETY

To prevent damage to your ad notam product or injury to yourself or to others, read the safety instruction in their entirety before installing and operating the product. Keep these safety instructions where all those who use the product will read them. Warranty will be null and void for any damage resulting from installation and operation not respecting these instructions.

CAUTION
RISK OF ELECTRIC SHOCK DO NOT OPEN
CAUTION: To reduce the risk of electric shock, do not remove cover (or back). There are no user serviceable parts inside. Refer all servicing to qualified personnel.



THIS ICON MARKS WARNING. Indicates that high voltage is present inside. It is dangerous to make any kind of contact with any internal part of this product.



THIS ICON MARKS WARNING. Indicates important literature concerning operation and maintenance. To prevent possible injury, read all warning before using this product.



THIS ICON MARKS CAUTION. To prevent the spread of fire, keep candles or other open flames away from this product at all times.

WARNINGS

- ⚠ LIQUIDS. Never expose the product to rain or water. Never place liquid containers, such as vases, near the product. If liquids are spilt on or into the product, disconnect it from the power outlet immediately. Contact your authorized dealer immediately to have the product checked before use.
- ⚠ GLASS. Parts of this product are made out of glass. Handle with care to avoid injury or damage.
- ⚠ HANDLING. Parts of this product are made out of glass and sharp material. Always wear safety shoes and gloves when handling the products or its packaging.
- ⚠ HANDLING. ad notam products are made of heavy components. Two or more people may be needed to transport large goods. When handling the goods make sure to separate and disconnects all parts before any movement. Do not put stress on the LCD nor glass/mirror. Prepare the environment properly to gently accommodate any item on a adequately soft and cushioned surface.
- ⚠ GLASS. The corners and edges of the glass are very delicate. Take care that they do not hit the wall, ceiling or floor in any way to avoid damages and split-offs.
- ⚠ ELECTRICITY. To avoid electric shock, never touch the inside of this product. Refer to a qualified technician.
- ⚠ ELECTRICITY. Do not overload wall outlets, extension cords or adaptors above their capacity, since this can result in fire or electric shock.
- ⚠ ELECTRICITY. Before you connect the product to the power outlet ensure that the power voltage matches the value printed on the back of the product. Never connect the product to the power outlet if the voltage is different.
- ⚠ ELECTRICITY. To disconnect the product from the mains power, the power plug of the product must be disconnected. When disconnecting the power, always pull the power plug, never the cord. Ensure that you have full access to the power plug, power cord and outlet socket at all times.
- ⚠ IRREGULAR OPERATION. If this product does not operate normally, in particular, if there are any unusual sounds or smells coming out of it, unplug it immediately and contact an authorized dealer or service center.
- ⚠ WET ENVIRONEMT. For installations in wet-rooms specific installation guidelines apply, which are to be seen in the context of placing a power adaptor outside of certain protection zones. These regulations differ by region. Please contact a specialist for this. In Germany electrical installations are to be performed by a skilled technician, while observing the regulations of the standard DIN VDE 0100 T.701.
- ⚠ INDOOR USE. The product is specifically designed for indoor use. There is danger of fire and of electric shocks and damage to the device if it is operated outdoors.
- ⚠ VENTILATION. Never insert objects into nor cover the ventilation slots or other openings on the product.
- ⚠ HEAT SOURCES. Do not place this product near or over heat sources or where it is exposed to direct sunlight. Never expose your product, remote control or batteries to excessive heat.
- ⚠ FLAMABLE GAS. Do not use in the presence of flammable gas, as this could result in explosion or fire.
- ⚠ CHILDREN. Keep out of reach of children. Failure to observe this precaution could result in injury.

CLEANING AND PRODUCT CARE

CLEANING. Use a soft damp cloth (cotton, flannel, etc.) and gently wipe the surface of the product. Wiping with a hard cloth or using strong force may scratch the surface of the product. Never touch, push, rub or strike the screen with any object.

CLEANING. Avoid using benzene, thinner and other solvents as they may deform the product and may cause the paint to peel off. Using a chemical cloth (wet/dry sheet type cloth, etc.) may cause damages and corrode the product. To avoid deformation and color fading, wipe off water drops as soon as possible.

ENVIRONMENT. On rare occasions, depending on temperature and humidity, minor condensation can occur on the inside of the glass front. To prevent this, do not expose the product to direct sunlight, heat or extreme humidity. If condensation occurs, it will disappear spontaneously after the product has played for a few hours.

ENVIRONMENT. The product must be stored in a dry and well ventilated room, without extreme temperature fluctuations. Heat sources and aggressive active substances may not be stored in the proximity of this product

ENVIRONMENTAL

ad notam aims to design, produce, deliver and dispose eco-friendly products. Our environmental policy applies to the entire product lifecycle and business activities.



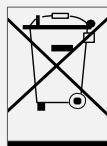
LOW STANDBY POWER

Our highly advanced power circuitry brings down power consumption to an extremely low level while in standby mode



EUROPEAN ENERGY LABEL

The European Energy Label informs you on the energy efficiency class of this product. The greener the energy efficiency class of this product is, the lower the energy it consumes. On the label, you can find the energy efficiency class, the average power consumption of this product in use and the average energy consumption for 1 year based on 4 hours' operations per day.

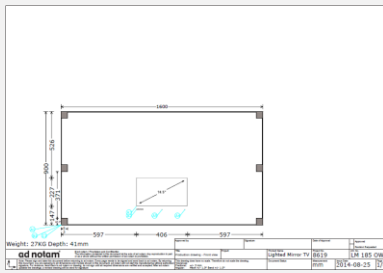


END OF USE

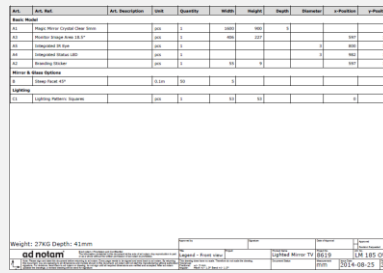
When this crossed-out wheeled bin symbol is attached to a product the product is covered by the European Directive 2002/96/EC. Inform yourself about the local separate collection system for electrical and electronic products. Act according to your local rules and do not dispose your old products with your normal household waste. Correct disposal of the product helps to prevent potential negative consequences for the environment and human health.

AD NOTAM CONFIGURATOR

Your own unique product, made by ad notam, has been designed with ad notam online configurator. Your configuration is a valuable reference. Keep a hardcopy of your configuration with this owner manual.



The *Shop Drawing - Front View* is necessary for Mirrors and Glass production, the most visible item of any device produced by ad notam. The *Front View* consists of 2 pages:



PRODUCT DELIVERY

WOODEN CRATE AND GIFTBOX INSPECTION

You purchased a high end device. Verify wooden crate and gift box integrity before unloading the product. If damage is noticed write all the information on the bill of lading and hand it to the driver of the forwarder. Pictures will be required for the claim process. You can consult your ad notam reseller for additional information.



WOODEN CRATE

WHAT IS IN THE BOX

Please check the following contents for completeness before using the product.



LIGHTED MIRROR



OWNER'S MANUAL



DIMMER
IR REMOTE (Optional)



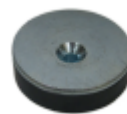
DIGITAL CLOCK
IR REMOTE (Optional)



IN WALL BRACKET
(Optional)



MAGNET HOLDER
PLATE (Optional)



FIXATION MAGNET
(Optional)



DISTANCE RING
(Optional)

MOUNTING YOUR AD NOTAM

BEFORE YOU START

Safety, environment, expert tips!

SAFETY

WARNINGS

- ⚠ **SAFETY.** To prevent damage to your ad notam product or injury to yourself or to others, read the safety instruction in their entirety before installing and operating the product. Keep these safety instructions where all those who use the product will read them. Warranty will be null and void for any damage resulting from installation and operation not respecting these instructions.
- ⚠ **QUALIFIED PERSONNEL.** Mounting this product requires structural measures and special skills. Refer exclusively to qualified personnel.
- ⚠ **ORIGINAL MATERIAL.** Always use ad notam supplied wall brackets and original spare parts to perform installation.
- ⚠ **WOODEN CRATE.** The wooden crate is securing glass and mirror. Incline the wooden crate adding a thick spacer (eg. 10 cm wooden bar) underneath the front foot to avoid all glass and mirror to fell off the crate while removing the front panel. Open carefully making sure a second person is on site.
- ⚠ **WALL FIXINGS.** ad notam doesn't provide screws and dowels with this product. Consider the construction environment, wall type, product weight and positioning when selecting raw bolts or resin anchors.
- ⚠ **QUALIFIED PERSONNEL.** Electrical connections must be performed by qualified professionals respecting national regulations and standards.

ENVIRONMENT

ad notam products include heavy, bulky and delicate items. To prevent damages to your ad notam product or injury to yourself or to others, prepare the installation environment properly.

CAUTIONS

- ✓ **ENVIRONMENT.** Clean the handling and installation environments properly before installation.
- ✓ **HANDLING.** Handling ease requires proper planning. Verify size, turning angles, bumps and potential hurdles before handling.
- ✓ **ENVIRONMENT.** ad notam mounting systems are engineered for vertical use only. Verify walls' verticality and items vertical and horizontal alignment to prevent serious injuries and product damage.
- ✓ **HANDLING.** Cushions the floor properly using soft anti slip mats near the handling areas. Lay the items gently on these cushioned anti slip surfaces when needed.
- ✓ **HANDLING.** Tilt the mirror and DFU top to the wall with an adequate angle of incidence when resting.

EXPERT TIPS

- ✓ **TOOLS** ad notam products installation requires specific professional tools. Verify the following page for a comprehensive list.

MOUNTING YOUR AD NOTAM

IN WALL MOUNTING - WALL PREPARATION

Your own ad notam has been pre-assembled according to your configuration instruction. The product back view including pre-assembled items is visible on your *shop drawing Page 3 (Back View)* you can find additional information on the visible items on *page 4 (Legend - Back View)*.

To determine the proper position of your ad notam on the wall the ad notam configuration provides an ideal Wall View preparation. The Wall View (including necessary items) is visible on *shop drawing page 5 (Wall View)*. Consult your *shop drawing page 6 (Legend - Wall View)* for additional information concerning spare parts necessary for installation. Refer to these pages during installation.

✓ EXPERT TIPS – TOOLS



MAGNET HOLDER PLATE (Optional)

IN WALL BRACKET (Optional)

Red tape
20 cm strip

FIXATION MAGNET (Optional)

DISTANCE RING (Optional)



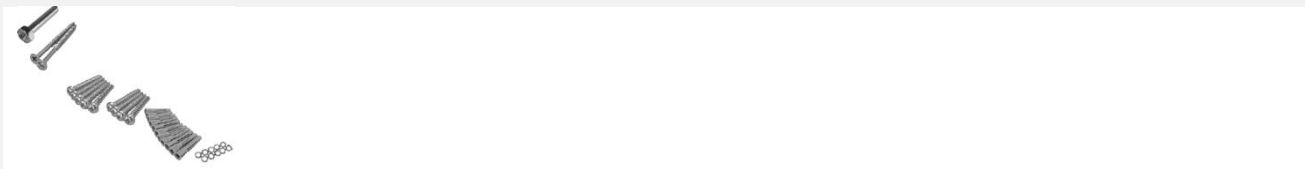
Power drill

Carpenter Pencil

Measuring tape

Level

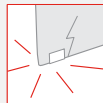
Screwdriver Set
Phillips Tip



Bolts, screws, screw anchors, lock washers



Please read the safety precautions before positioning the product. Always use the supplied wall brackets and parts. Wall mounting this product requires special skills and should only be performed by qualified personnel. Electrical connections are to be performed by a skilled technician following local regulations. Two people are required to lift and carry a product that weights more than 25kg or 55lbs. ad notam does not guarantee the efficiency of screws and dowels delivered with this product. Those may be replaced on site considering the construction environment, type of wall, product weight and positioning. ad notam bears no responsibility for improper mounting or any mounting that results in accident or injury.

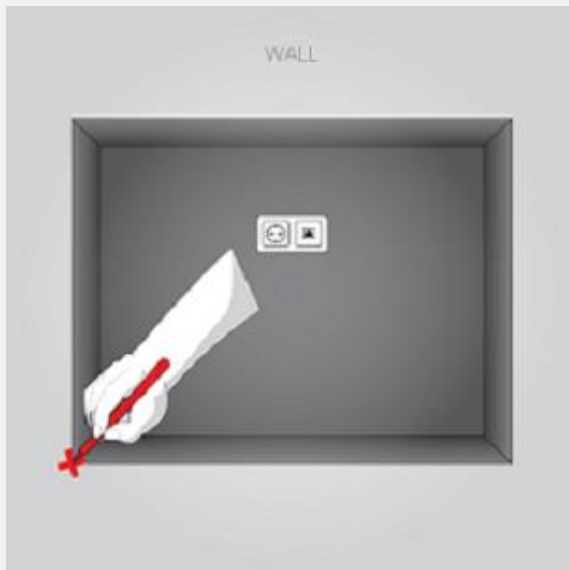


Please Note:

The corners and edges of the glass are very delicate. Take care that they do not hit the wall, ceiling or floor in any way to avoid damages and split-offs.

STEP 1 - WALL PREPARATION

- The following slides explain how to identify and mark the drilling points on the wall. ad notam provides different mounting combinations. Verify your own *shop drawing page 6 (Wall View – Legend)* to identify your wall mounting option. The column Art. Description provides the description of the selected items necessary for your wall preparation.



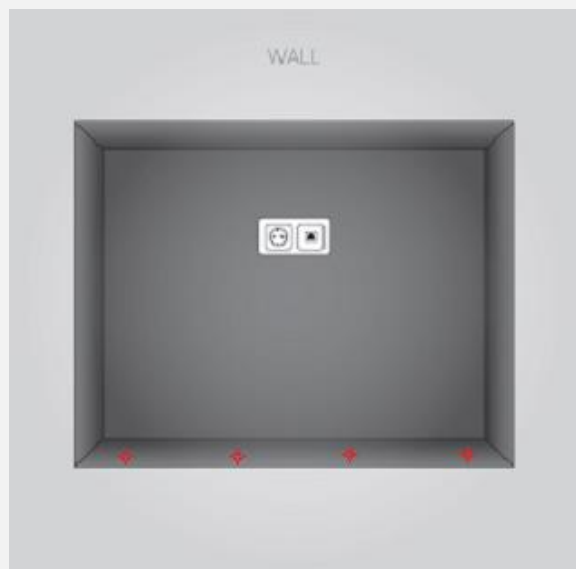
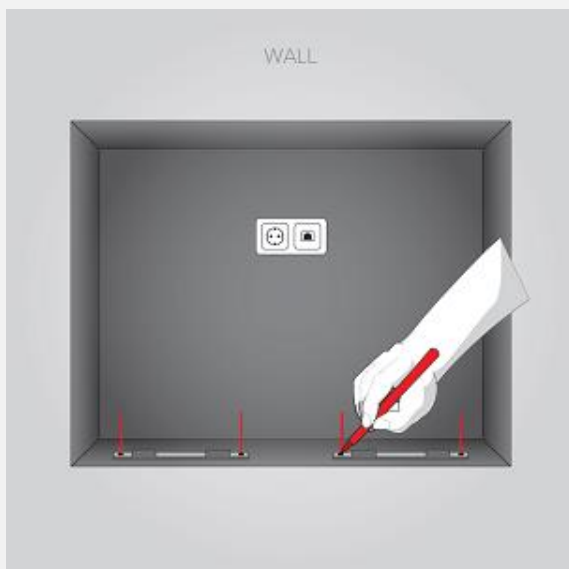
Art.	Art. Ref.	Art. Description	Unit	Quantity	Width	Height	Depth	Diameter	x-Position	y-Position
Basic Model										
A1		Magic Mirror Crystal Clear 5mm	pcs	1	1600	900	5			
A12		Wall Locker Plate 36 (OWMS)	pcs	1	60	60	30		770	35
A13		Wall Metal Plate 880_36 (OWMS) (1)	pcs	1	880	68	33		800	107

Footnotes
 (1) Caution! The x/y middle-position of the „Wall Metal Plate 880_36 (OWMS)“ is referred to the glass top left point

Weight: 27KG Depth: 41mm

ad notam	Lighted Mirror TV	8619	LM 185 OW
mm	2014-08-25	6/8	

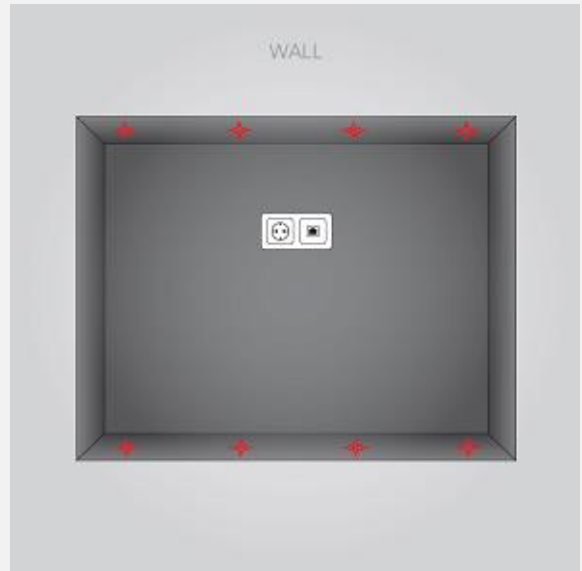
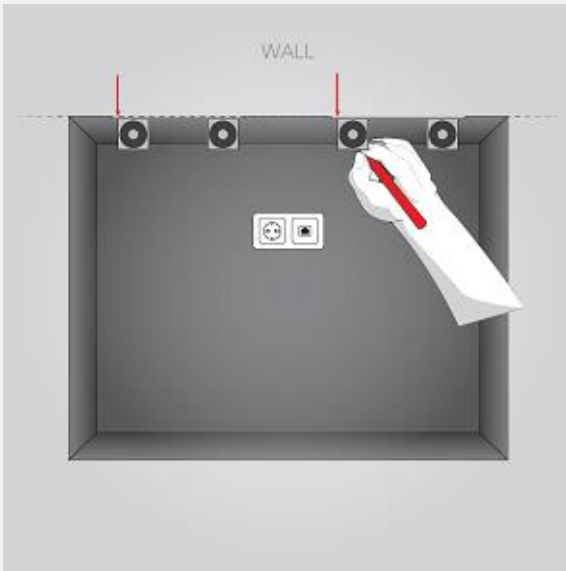
- Reference point. Identify your ad notam position on the wall and identify the bottom left corner of the crystal. Mark this point with the pencil.
- Reference point (Point 0) is used in the ad notam *shop drawing Wall View – Legend (Page 6)*. The items reference coordinates are starting from here.
- Art. Description Verify your own configuration page 6 (Wall View – Legend) to identify your mounting option. The column provides the description of the selected items necessary for your wall preparation.



- Art. Description – IN WALL BRACKET. (*Not found? Move to the next step.*) Verify x-position and y-position. These coordinates correspond to the IN WALL BRACKET bottom left corner. Start from the reference point moving to the right on the horizontal axe and mark the point (y-position).

✓ **EXPERT TIPS.** Before proceeding consider your crystal position. For recessed installation the drilling points must be positioned at 30 mm from the back of your crystal (25 mm for IN WALL BRACKET 150, 15 cm width). For flush installation consider: Glass Depth + 30 mm (25 mm for IN WALL BRACKET 150, 15 cm width). Marginal inaccuracy can be corrected with the long slots in the IN WALL BRACKET.

- Art. Description – IN WALL BRACKET. (*Not found? Move to the next step.*) Position the IN WALL BRACKET and mark the drilling points with a pencil. Caution: you might have more IN WALL BRACKETs. Repeat the procedure for each one of them.



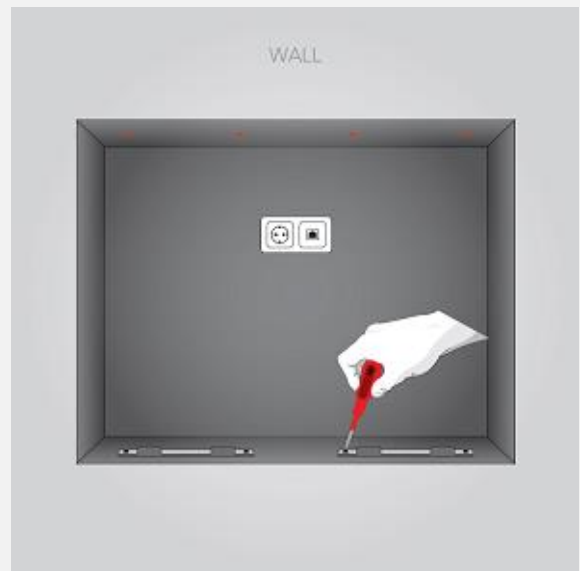
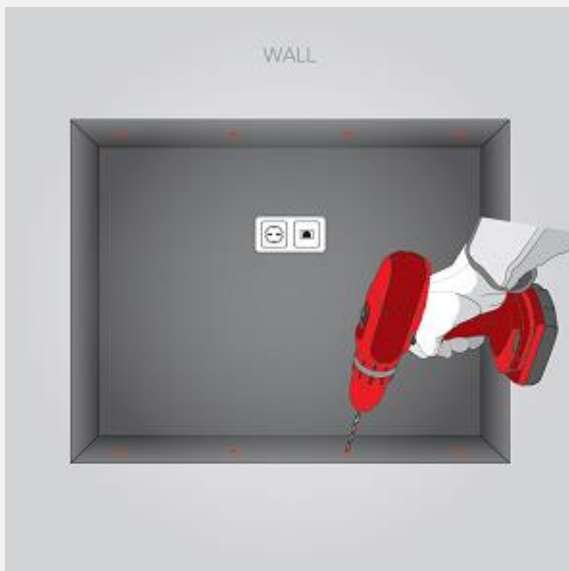
7. Art. Description – MAGNET HOLDER PLATE. *(Not found? Move to the next step.)* Verify x-position and y-position. These coordinates correspond to the MAGNET HOLDER PLATE bottom left corner. Identify the glass upper edge considering your glass height starting from your reference point. From the upper edge left corner moving to the right on the horizontal axe identify the x-position of the MAGNET HOLDER PLATE.

✓ EXPERT TIPS. Before proceeding consider your crystal position. For recessed installation the drilling points must be positioned at 30 mm from the back of your crystal (25 mm for MAGNET HOLDER PLATE 150, 15 cm width). For flush installation consider: Glass Depth + 30 mm (25 mm for MAGNET HOLDER PLATE 150, 15 cm width). Marginal inaccuracy can be corrected with the long slots in the MAGNET HOLDER PLATE.

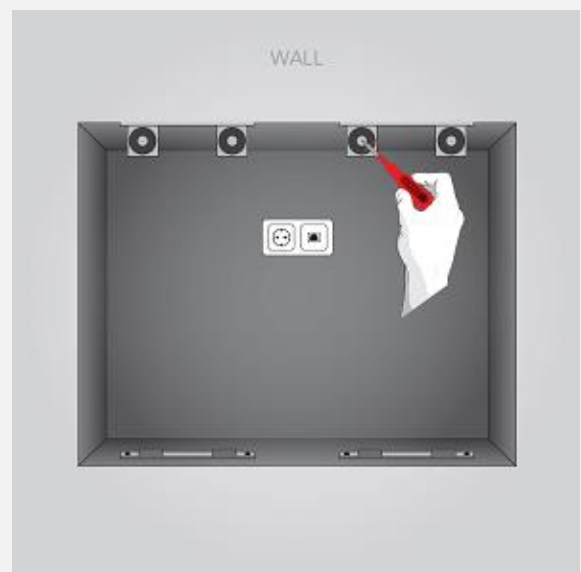
8. Art. Description – MAGNET HOLDER PLATE. *(Not found? Move to the next step.)* Position the MAGNET HOLDER PLATE and mark the drilling points with a pencil. Caution: you might have more MAGNET HOLDER PLATES. Repeat the procedure for each one of them.

STEP 2 - WALL PREPARATION

- 1) The following paragraphs explain how to mount the different elements on the wall. ad notam provides different mounting combinations. Verify your own *shop drawing page 6 (Wall View – Legend)* to identify your wall mounting option. The column Art. Description provides the description of the selected items necessary for your wall preparation.
 - ✓ ARCHITECTURAL. Structural measures must be accomplished for an on-wall installation. ad notam declines any liability for the screws and screw anchors used on site.
 - ✓ ENVIRONMENT. ad notam mounting systems are engineered for vertical use only. Verify walls' verticality and items vertical and horizontal alignment to prevent serious injuries and product damage.
- 2) You marked all drilling points on the wall. Drill at the marks and proceed adding the appropriate screw anchors.



- 3) Art. Description Verify your own configuration page 6 (Wall View – Legend) to identify your mounting option. The column provides the description of the selected items necessary for your wall preparation.
- 4) Art. Description – PLASTIC SPACERS. *(Not found? Move to the next step.)* These items need to be combined with the IN WALL BRACKET for installation flush to the wall. Position the item below the IN WALL BRACKET before securing the screw.
- 5) Art. Description – IN WALL BRACKET. *(Not found? Move to the next step.)* Secure the IN WALL BRACKET verifying screws anchors alignment before firmly locking the first screw. Proceed with the other screws mirroring their position right and left.



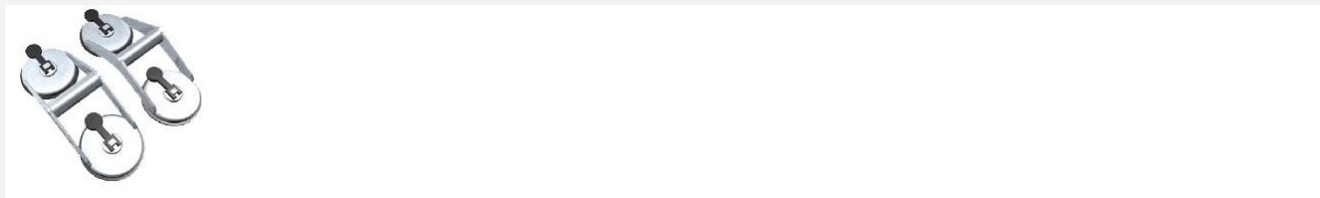
- 6) Art. Description – MAGNET HOLDER PLATE. *(Not found? Move to the next step.)* Secure the MAGNET HOLDER PLATE verifying screws anchors alignment before firmly locking the first screw. Proceed with the other screws mirroring their position on the right and left side.
- 7) Caution: you might have more MAGNET HOLDER PLATE s. Repeat the procedure for each one of them.

MOUNTING YOUR AD NOTAM

ON WALL MOUNTING – FINAL ASSEMBLY

Your own ad notam has been pre-assembled according to your configuration instruction. The product back view including pre-assembled items is visible on your *shop drawing Page 3 (Back View)* you can find additional information on the visible items on *page 4 (Legend - Back View)*. The product Wall View is visible on *shop drawing page 5 (Wall View)*. Consult your *shop drawing page 6 (Legend - Wall View)* for additional information concerning spare parts necessary for installation. Refer to these pages during installation.

✓ EXPERT TIPS – TOOLS

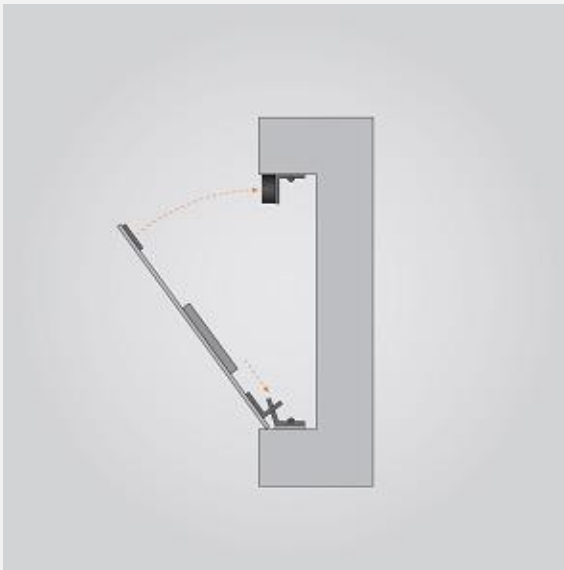


Glass Suction Cups

STEP 3 - FINAL ASSEMBLY

The following slides explain how to identify, mount and secure your ad notam to the wall. ad notam provides different mounting combinations. Verify your own *shop drawing page 6 (Wall View – Legend)* and *shop drawing page 4 (Back View – Legend)* to identify your monitor mounting option. The column Art. Description provides the description of the selected items necessary for your installation.

- ✓ ENVIRONMENT. ad notam mounting systems are engineered for vertical use only. Verify walls' verticality and items vertical and horizontal alignment to prevent serious injuries and product damage.
 - ✓ ELECTRICITY. Before you connect the product to the power outlet ensure that the power voltage matches the value printed on the back of the product. Never connect the product to the power outlet if the voltage is different.
 - ✓ EXPERT TIPS. You prepared the wall marking the points, installed the necessary items. After cleaning the installation environment you can proceed with the final assembly. Your own unique ad notam have been pre-assembled at factory and additional items, wiring and connections need to be performed on site. Evaluate your handling clearance considering cables lengths and connections. Cushion the handling area properly using soft anti-slip mats. Lay the items gently on these cushioned anti slip surfaces when needed.
 - ✓ HANDLING. Cushions the floor properly using soft anti-slip mats near the handling areas. Lay the items gently on these cushioned anti slip surfaces when needed.
 - ✓ ELECTRICITY. Do not overload wall outlets, extension cords or adaptors above their capacity, since this can result in fire or electric shock.
 - ✓ ENVIRONMENT. Clean the handling and installation environments properly before installation.
- 1) Art. Description Verify your own *shop drawing page 6 (Wall View – Legend)* and *shop drawing page 4 (Back View – Legend)* to identify your final assembly option. The column Art. Description provides the description of the selected items necessary for your installation
- ✓ EXPERT TIPS. Clean the crystal rear side and the monitor properly before proceeding.



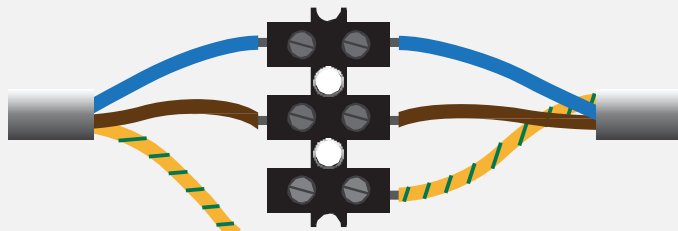
- 2) Art. Description – SELF ADHESIVE METAL PLATE. *(Not found? Move to the next step.)* The SELF ADHESIVE METAL PLATE (counterpart for IN WALL BRACKET) is pre-mounted to the back side of the glass. Use the suction cups to elevate the crystal in order to secure the slide-in mechanism at the bottom of the crystal.
- 3) Art. Description - FIXATION MAGNET. *(Not found? Move to the next step.)* Gently bring the top part of the crystal in vertical position, the magnets will pull and hold the crystal providing additional support.

CONNECT YOUR PRODUCT

POWER

LUSTER TERMINAL AND OPEN ENDED POWER CORD

⚠ This type of electrical connections are to be performed by a skilled technician only following local electrical and safety regulations. Make sure that each product's electrical component such as screen, heating foil and lighting, have its own mains circuit. Avoid connecting them to the same mains circuit.



● blue - Neutral ● yellow/green - Earth ● brown- Live

USING YOUR TOUCHPAD (OPTIONAL)

Integrated into the glass or mirror surface the touch keypad provides a totally waterproof and vandalism-resistant interface solution to control the basic functions of the light.



LIGHTING ON/OFF

Once your product is equipped with a lighting dimmer use the lighting key to toggle screen power between ON and OFF mode.



LIGHTING DIM UP/DOWN

Once your product is equipped with a lighting dimmer use the lighting (+) and (-) keys to set the lighting brightness. A short touch will change the brightness in one step while a long touch will change the brightness continuously till your release.



USING YOUR DIMMER REMOTE CONTROL (OPTIONAL)

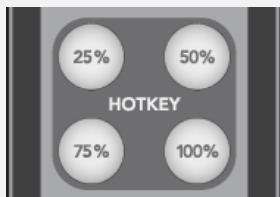


ON/ OFF Switch illumination ON/OFF

DELAY OFF Switch illumination OFF with a 30 second delay



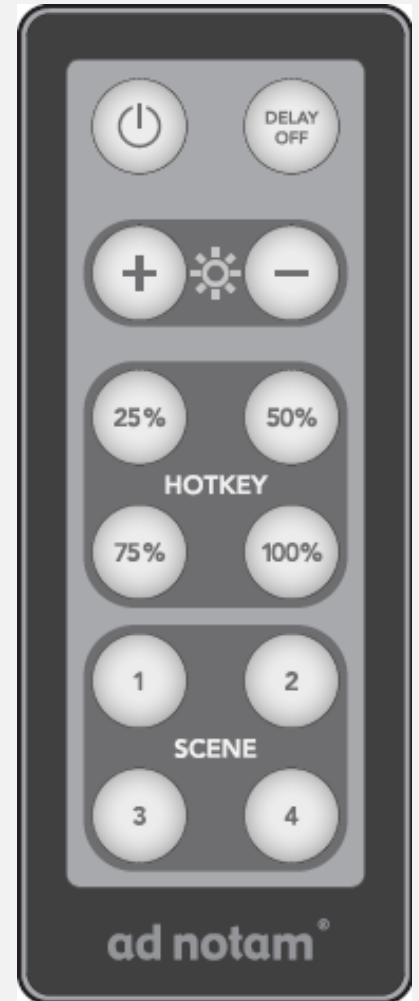
DIM +/- Increase / decrease illumination brightness with a total of 256 adjustable levels



HOTKEY Access your 4 brightness shortcuts: 25% - 50% - 75% - 100%



SCENE Select 4 individual illumination levels
Select the required brightness and press the given key for 3 seconds in order to save the settings



Dimmer key features

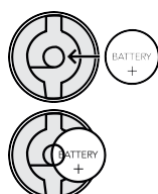
- ✓ 0~100% brightness adjust
- ✓ PWM (Pulse-Width Modulation) technology
- ✓ Wireless IR remote or touchpad dimming
- ✓ Easy to operate
- ✓ Scale level of 256 steps, soft & smoothly operation without flickering
- ✓ 4 Factory Presets, and 4 User-Defined Presets for fast adjustments
- ✓ Delay Off Functionality
- ✓ Nightlight program (1% brightness adjust)

BATTERIES

Please replace the batteries if your remote signal is weak. Make sure that battery is inserted with the right +/- polarity marking. The battery cover needs to be completely closed in order to preserve the remote's waterproof capabilities.



Observe that the contact clip (+) is connected correctly to the plus pole of the battery. If the contact clip is positioned under the battery, the remote control will not work.



Risk of swallowing batteries! The DIMMER IR remote control contains a coin-type battery, which can be swallowed. Keep the battery out of reach of children at all times! Dispose of batteries according to environmental directives.

ADJUSTING YOUR DIGITAL CLOCK (OPTIONAL)

The digital clock features bright white LED digit design, and can be combined with any of the ad notam glass and mirror options for a cool complete glowing look. A backup battery provides power to the digital clock when the primary source of power is interrupted or unavailable.



DISPLAY ON/OFF

Use the power/esc key to toggle the clocks display between ON and OFF mode.



SETTING TIME USING NUMERIC KEYS

You can set the time of the digital clock by using the numeric keys on the remote. To do so please follow the following steps:

STEP 1

Press the time key to enter the time setting mode.



STEP 2

Press the numeric keys in a sequence representing the desired time. For example to set the clock to 14:35 please press the numeric keys in the following order: 1, 4, 3 and 5.



In order to exit the time setting mode, at any time, WITHOUT saving your changes please press the power/esc key.

SETTING TIME FORMAT (12H/24H)

You can choose the time format between 12 hours and 24 hours display. To do so please follow the following steps:

STEP 1

Press the edit key to enter the format setting mode.



STEP 2

Press the up or down keys to change the time format display.



STEP 3

Press the enter key to confirm your changes and exit format setting mode.



ad notam®

MAGIC
MIRROR®

MIRROR IMAGE®

ad notam®, MIRROR IMAGE® and MAGIC MIRROR®
are licensed trademarks of ad notam.



HDMI, the HDMI logo and high definition multimedia
interface are trademarks of HDMI Licensing LLC.

This product, parts, components and the assembly are
protected by or might be part of one or more of the
following intellectual property rights:

US 7455412 B2
US 7589893 B2
EP 1168285 B2
EP 1429308 B2
EP 1809828 B1



HIDDEN TECHNOLOGY – TECHNOLOGY BECOMES INVISIBLE.

To solve any ad notam product related problem, you can
consult our online support. You can select your language
and enter your product model number.

Go to www.ad-notam.com

SERVICE & SUPPORT

Warranty terms apply
Damaged goods terms apply
RMA procedure terms apply

For more detailed info please visit our website at:
www.ad-notam.com

CONTACT INFORMATION

ad notam AG
www.ad-notam.com

Copyright © 2015 by ad notam. All Rights Reserved.

This Manual, as a whole, in part or excerpts, may not be reproduced, copied, stored in data retrieval system or transferred electronically, mechanically or in any other way, shape or form without prior written authorization by ad notam.

Specifications of the ad notam products are subject to unannounced changes. This manual may thus not reflect the current technical status of ad notam's product.